

# Consilva

CATALOGO

Rossini Giblor's

2023

4 ITALIAN FAMILIES' STORY

6 ÷ 45 **Chef Style**

8 GIACCHE CHEF / *CHEF'S JACKETS*

28 PANTALONI CHEF / *CHEF'S PANTS*

36 GREMBIULI CHEF / *CHEF'S APRONS*

40 ACCESSORI CHEF / *CHEF'S ACCESSORIES*

44 CALZATURE CHEF / *CHEF'S FOOTWEAR*

46 ÷ 117 **Ho.Re.Ca. & Service**

48 GREMBIULI / *APRONS*

84 ACCESSORI / *ACCESSORIES*

92 COMPLETI / *SUITS AND JACKETS*

96 GILET / *WAISTCOATS*

98 PANTALONI / *PANTS*

100 CAMICIE / *SHIRTS AND BLOUSES*

104 CAMICI / *COATS*

108 CASACCHE / *TUNICS*

118 ÷ 147 **Health&Wellness**

120 CAMICI / *APRONS*

124 CASACCHE E PANTALONI / *TUNICS AND PANTS*

148 TESSUTI, TAGLIE E LAVAGGI  
*FABRICS, SIZES AND WASHING SYMBOLS*

154 INDICE ALFABETICO PRODOTTI  
*ALPHABETICAL INDEX OF PRODUCTS*

**ESSENTIAL**  
COLLECTION

# Torna l'appuntamento con il magazine che ti porta alla scoperta del mondo GIBLOR'S



Interviste, approfondimenti e articoli per raccontare tutte le attività, le collaborazioni e le novità del momento.

**GIBLOR'S**  
italian worklife specialist

Richiedi una copia al tuo rivenditore GIBLOR'S di fiducia oppure cercala su **GIBLORS.COM**

# Italian families story

Le belle storie iniziano sempre con impegno e passione. Se poi l'entusiasmo viene condiviso con qualcuno che crede in un progetto e collabora per farlo crescere, il futuro offre ancora più prospettive.

La famiglia Giberti lo ha imparato molti anni fa, fin da quando i fratelli Roberto e Loris decisero di rilanciare la piccola azienda sartoriale fondata dai genitori.

Negli stessi anni, l'azienda Rossini cresceva su presupposti simili, grazie all'impegno di Marco e delle due sorelle Wilma e Tiziana.

Due famiglie diverse che, insieme, contano quasi 100 anni di esperienza, idee, aspirazioni e una visione imprenditoriale legata alle radici e alla tradizione familiare.

Valori comuni che, ora, hanno portato il marchio Gíblor's ad entrare a far parte del gruppo Rossini Trading S.p.A. con l'intento di alzare ancora di più gli standard qualitativi nel settore dell'abbigliamento professionale in Italia.

Un'acquisizione che lascia alla guida di Gíblor's il suo AD storico, Roberto Giberti, in linea con l'approccio che ha permesso all'azienda di crescere e distinguersi per impegno artigianale, stile sartoriale, qualità, tecnologia e attenzione al design.

Competenze e valori che, in modi diversi ma affini, Rossini e Gíblor's hanno intrecciato come i fili di un'unica trama e che, da oggi, diventano gli elementi di un progetto più grande e importante.

Una nuova storia condivisa, con l'obiettivo di dividere i compiti, moltiplicare il successo e affrontare con determinazione tutte le sfide del futuro.

*Good stories always start with commitment and passion.*

*And if the enthusiasm is shared with someone who believes in a project and collaborates to make it grow, the future offers even more perspectives.*

*The Giberti family learned this many years ago, ever since the brothers Roberto and Loris decided to relaunch the small tailoring company founded by their parents.*

*In the same years, the Rossini company grew on similar assumptions, thanks to the commitment of Marco and the two sisters Wilma and Tiziana. Two different families that, together, have almost 100 years of experience, ideas, aspirations and an entrepreneurial vision linked to the roots and to the family tradition. Common values that, now, have led the Gíblor's brand to become part of the Rossini Trading S.p.A. group with the intention of raising even more the quality standards in the professional clothing sector in Italy. An acquisition that leaves its historic CEO, Roberto Giberti, at the helm of Gíblor's, in line with the approach that has allowed the company to grow and stand out for its craftsmanship, tailoring style, quality, technology and attention to design.*

*Skills and values that, in different but similar ways, Rossini and Gíblor's have intertwined like the threads of a single plot and which, from today, become the elements of a larger and more important project.*

*A new shared history, with the aim of dividing tasks, multiplying success and facing all the challenges of the future with determination.*

**Gíblor's**

italian worklife specialist

è un'azienda del gruppo

**rossini.**







La linea **Giblor's Essential** nasce per soddisfare una fascia di consumatori molto attenta all'equilibrio qualità prezzo, e si deve alla grande esperienza maturata dal brand in quasi cinquant'anni di attività.

I capi che troverete nella linea **Essential Chef & Ho.re.ca.** infatti mantengono gli standard che contraddistinguono da sempre gli articoli a marchio **Giblor's** e sono studiati per garantire un'ottima vestibilità e il massimo comfort durante le ore di lavoro.

La collezione si compone di giacche classiche con bottoni estraibili, ma ospita anche giacche in tessuto cotone stretch. Grande spazio è riservato ai grembiuli, in un'ampissima gamma di colori, da quelli in poli-cotone a quelli in poliestere no stiro, tutti corredati dai propri accessori.

# ESSENTIAL

## COLLECTION

*The **Giblor's Essential** line was created to satisfy a range of consumers who are very attentive to the balance between quality and price, and is due to the great experience gained by the brand in almost fifty years of activity.*

*The garments that you will find in the **Essential Chef & Ho.re.ca.** line in fact maintain the standards that have always distinguished **Giblor's** branded items and are designed to ensure an excellent fit and maximum comfort during working hours.*

*The collection consists of classic jackets with removable buttons, but also hosts jackets in stretch cotton fabric. Large space is reserved for aprons, in a very wide range of colors, from those in poly-cotton to those in non-iron polyester, all accompanied by their own accessories.*

## chef style

Giacche bottone a pressione  
Press studs fastening jackets

# AUGUSTIN

### Dettagli / Details

- Bottoni a pressione
- Taschino portapenne sulla manica

- Press studs
- Pen pocket on sleeve

### Taglie / Sizes

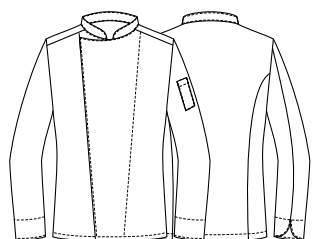
S ÷ 4XL Slim Fit

**COD. Q8G00187**

C01 Bianco / White  
U32 Nero / Black

### Tessuto / Fabric

97% cotone 3% elasthan  
97% cotton 3% elastane  
185 g / m<sup>2</sup>



**COD. Q8G00187**

U32 Nero / Black



COMFORT



**COD. Q8G00187**

C01 Bianco / White

COMFORT



**COD. Q8G00188**

U32 Nero / Black

**chef style**

Giacche bottone a pressione  
Press studs fastening jackets

## CELINE

### Dettagli / Details

- Bottoni a pressione
- Taschino portapenne sulla manica

- Press studs
- Pen pocket on sleeve

### Taglie / Sizes

XS ÷ XXXL Slim Fit

**COD. Q8G00188**

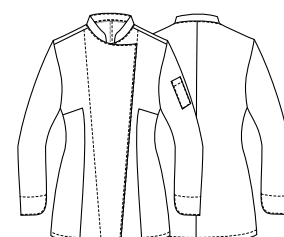
U32 Nero / Black  
C01 Bianco / White

### Tessuto / Fabric

97% cotone 3% elastan  
97% cotton 3% elastane  
185 g / m<sup>2</sup>



COMFORT



**COD. Q8G00188**

C01 Bianco / White



COMFORT



**COD. Q8GX0106**

Art. 19P08G098  
J32 Jeans nero / Black jeans

## chef style

Giacche bottone a pressione  
Press studs fastening jackets

# ULISSE

### Dettagli / Details

- Bottoni a pressione
- Taschino sul petto
- Taschino portapenne sulla manica
- 2 spacchetti dietro
- Inserti in Alcantara
- Asola nel collo per inserire il laccio del grembiule
- Press studs
- Breast pocket
- Pen pocket on sleeve
- 2 side vents
- Alcantara panels
- Eyelet to insert apron's halter

### Taglie / Sizes

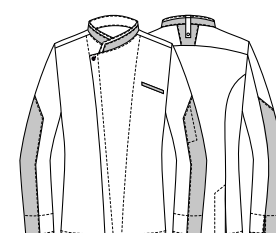
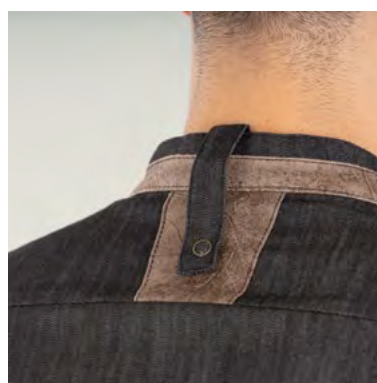
S ÷ 4XL Slim Fit

**COD. Q8GX0106**

Art. 19P08G098  
J32 Jeans nero / Black jeans

### Tessuto / Fabric

75% cotone 23% poliestere 2% elasthan  
75% cotton 23% polyester 2% elastane  
210 g / m<sup>2</sup>



## chef style

Giacche bottone a pressione  
*Press studs fastening jackets*

# DIONISIO

### Dettagli / Details

- Bottoni a pressione
- Taschino sul petto
- Taschino portapenne sulla manica
- Inserti in rete
- 2 spacchetti dietro
- Asola nel collo per inserire il laccio del grembiule
- Inserti in jeans

- *Press studs*
- *Breast pocket*
- *Pen pocket on sleeve*
- *Network fabric panels*
- *2 side vents*
- *Eyelet to insert apron's halter*
- *Jeans inserts*

### Taglie / Sizes

S ÷ 4XL Slim Fit

**COD. Q8GX0107**

Art. 19P08G084  
U32 Nero / Black

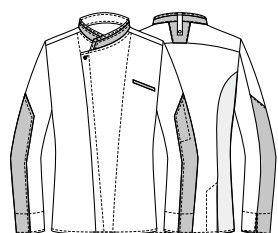
### Tessuto / Fabric

50% lyocell 50% poliestere  
50% lyocell 50% polyester  
180 g / m<sup>2</sup>

Pantalone abbinabile  
*Matching pants*

## GIOVE

pag. 33





**Tencel™**  
Feels so right



**COD. Q8GX0107**

Art. 19P08G084  
U32 Nero / Black

## chef style

Giacche bottone a pressione  
Press studs fastening jackets

# PATRIZIO

### Dettagli / Details

- Bottoni a pressione
- Taschino sul petto
- Taschino portapenne sulla manica
- Inserti in rete
- Profilo grigio

- Press studs
- Breast pocket
- Pen pocket on sleeve
- Network fabric panels
- Grey piping

### Taglie / Sizes

S ÷ 4XL Slim Fit

**COD. Q8G00190**

U32 Nero / Black

### Tessuto / Fabric

65% poliestere 35% cotone  
65% polyester 35% cotton  
200 g / m<sup>2</sup>

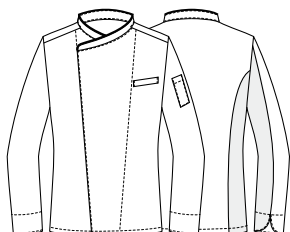
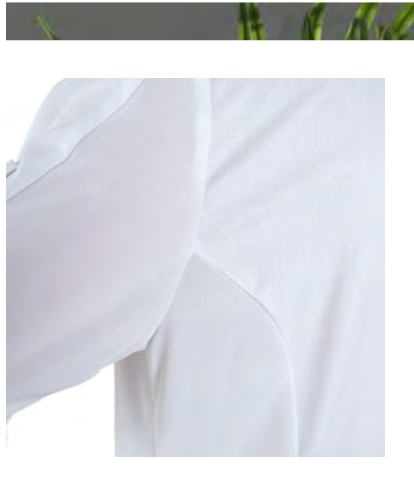


**COD. Q8G00189**

C01 Bianco / White

### Tessuto / Fabric

100% cotone  
100% cotton  
185 g / m<sup>2</sup>



**COD. Q8G00189**

C01 Bianco / White





**COD. Q8G00190**

U32 Nero / Black

## chef style

Giacche bottone a pressione  
*Press studs fastening jackets*

# SUSI

### Dettagli / Details

- Bottoni a pressione
- Taschino sul petto
- Taschino portapenne sulla manica
- Inserti in rete
- Profilo grigio

- Press studs
- Breast pocket
- Pen pocket on sleeve
- Network fabric panels
- Grey piping

### Taglie / Sizes

XS ÷ 3XL Slim Fit

**COD. Q8G00191**

C01 Bianco / White

### Tessuto / Fabric

100% cotone  
100% cotton  
185 g / m<sup>2</sup>

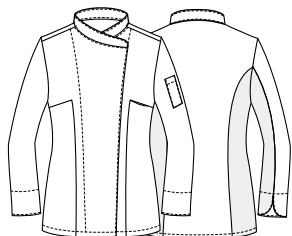


**COD. Q8G00192**

U32 Nero / Black

### Tessuto / Fabric

65% poliestere 35% cotone  
65% polyester 35% cotton  
200 g / m<sup>2</sup>



**COD. Q8G00192**

U32 Nero / Black



**COD. Q8G00191**

C01 Bianco / White

## chef style

Giacche bottone a pressione  
*Press studs fastening jackets*

# PATRIZIO

### Dettagli / Details

- Bottoni a pressione
- Taschino sul petto
- Taschino portapenne sulla manica
- Inserti in rete
- Profilo tricolore italiano

- *Press studs*
- *Breast pocket*
- *Pen pocket on sleeve*
- *Network fabric panels*
- *Italian flag piping*

### Taglie / Sizes

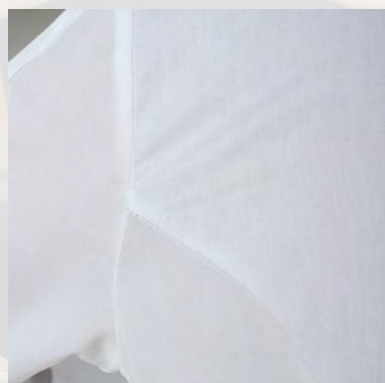
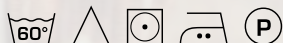
S ÷ 4XL Slim Fit

**COD. Q8G00189**

P50 ITA / ITA

### Tessuto / Fabric

100% cotone  
100% cotton  
185 g / m<sup>2</sup>



## chef style

Giacche bottone a pressione  
Press studs fastening jackets

# SUSI

### Dettagli / Details

- Bottoni a pressione
- Taschino sul petto
- Taschino portapenne sulla manica
- Inserti in rete
- Profilo tricolore italiano

- Press studs
- Breast pocket
- Pen pocket on sleeve
- Network fabric panels
- Italian flag piping

### Taglie / Sizes

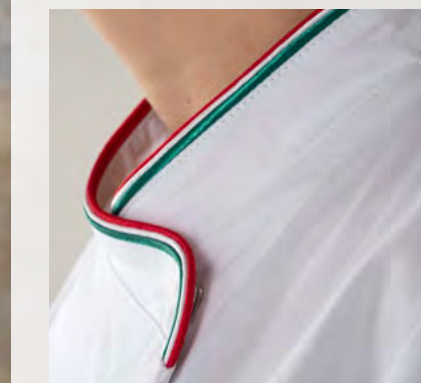
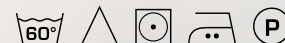
XS ÷ 3XL Slim Fit

**COD. Q8G00191**

P50 ITA / ITA

### Tessuto / Fabric

100% cotone  
100% cotton  
185 g / m<sup>2</sup>



## chef style

Giacche bottone a pressione  
*Press studs fastening jackets*

# RAUL

### Dettagli / Details

- Bottoni a pressione
- Taschino sul petto
- Taschino portapenne sulla manica
- Rete sulla schiena

- *Press studs*
- *Breast pocket*
- *Pen pocket on sleeve*
- *Network fabric on the back*

**COD. Q8GX0104**

Art. 22P08G322  
C01 Bianco / *White*

### Taglie / Sizes

S ÷ 4XL Slim Fit

### Tessuto / Fabric

100% cotone / *cotton*  
185 g / m<sup>2</sup>

**COD. Q8GX0105**

Art. 22P08G323  
U35 Bordeaux / *Burgundy*  
U32 Nero / *Black*  
Z41 Tortora / *Taupe*  
Z48 Blu / *Blue*  
Z44 Marrone / *Brown*  
C02 Grigio / *Grey*  
Z43 Verde militare / *Military green*

### Taglie / Sizes

S ÷ 4XL Slim Fit

### Tessuto / Fabric

65% poliestere 35% cotone  
65% *polyester* 35% *cotton*  
200 g / m<sup>2</sup>



**COD. Q8GX0105**

Art. 22P08G323  
019 Grigio chiaro / *Light grey*



**COD. Q8GX0104**

Art. 22P08G322  
C01 Bianco / White



**COD. Q8GX0105**

Art. 22P08G323  
U35 Bordeaux / Burgundy



**COD. Q8GX0105**

Art. 22P08G323  
U32 Nero / Black



**COD. Q8GX0105**

Art. 22P08G323  
Z41 Tortora / Taupe



**COD. Q8GX0105**

Art. 22P08G323  
Z48 Blu / Blue



**COD. Q8GX0105**

Art. 22P08G323  
Z44 Marrone / Brown



**COD. Q8GX0105**

Art. 22P08G323  
C02 Grigio / Grey



**COD. Q8GX0105**

Art. 22P08G323  
Z43 Verde militare / Military green

## chef style

Giacche bottone a pressione  
Press studs fastening jackets

# THIAGO

### Dettagli / Details

- Bottoni a pressione  
- Taschino sul petto - Rete sulla schiena

- Press studs - Breast pocket  
- Network fabric on the back

### COD. Q8GX0103

Art. 22P08G640  
Z41 Tortora / Taupe  
Z48 Blu / Blue  
U35 Bordeaux / Burgundy  
Z44 Marrone / Brown  
Z43 Verde militare / Military green

### Taglie / Sizes

S ÷ 4XL Slim Fit

### Tessuto / Fabric

65% poliestere 35% cotone  
65% polyester 35% cotton  
200 g / m<sup>2</sup>

### COD. Q8GX0102

Art. 19P08G640  
C02 Grigio / Grey

### Taglie / Sizes

S ÷ 4XL Slim Fit

### Tessuto / Fabric

65% poliestere 35% cotone  
65% polyester 35% cotton  
200 g / m<sup>2</sup>

### COD. Q8GX0101

Art. 15P08G640  
U32 Nero / Black

### Taglie / Sizes

S ÷ 5XL Slim Fit

### Tessuto / Fabric

65% poliestere 35% cotone  
65% polyester 35% cotton  
200 g / m<sup>2</sup>

### COD. Q8GX0100

Art. 15P08G641  
C01 Bianco / White

### Taglie / Sizes

S ÷ 5XL Slim Fit

### Tessuto / Fabric

100% cotone / cotton  
185 g / m<sup>2</sup>



### COD. Q8GX0103

Art. 22P08G640  
004 Blu / Blue





**COD. Q8GX0103**

Art. 22P08G640  
Z41 Tortora / Taupe



**COD. Q8GX0103**

Art. 22P08G640  
U35 Bordeaux / Burgundy



**COD. Q8GX0103**

Art. 22P08G640  
Z44 Marrone / Brown



**COD. Q8GX0103**

Art. 22P08G640  
Z48 Blu / Blue



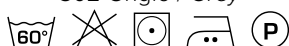
**COD. Q8GX0103**

Art. 22P08G640  
Z43 Verde militare / Military green



**COD. Q8GX0102**

Art. 19P08G640  
C02 Grigio / Grey



**COD. Q8GX0101**

Art. 15P08G640  
U32 Nero / Black



**COD. Q8GX0100**

Art. 15P08G641  
C01 Bianco / White



## chef style

Giacche bottone estraibile  
Removable buttons jackets

# ADRIANO

### Dettagli / Details

- Bottoni estraibili
- Taschino portapenne sulla manica

- Removable buttons
- Pen pocket on sleeve

### Taglie / Sizes

XS ÷ 5XL Slim Fit

**COD. Q8G00183**

C01 Bianco / White

### Tessuto / Fabric

100% cotone  
100% cotton  
185 g / m<sup>2</sup>

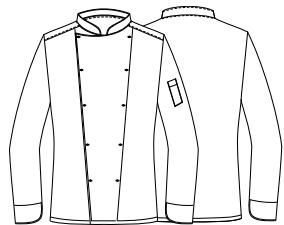
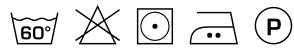


**COD. Q8G00184**

U32 Nero / Black

### Tessuto / Fabric

65% poliestere 35% cotone  
65% polyester 35% cotton  
200 g / m<sup>2</sup>



**COD. Q8G00184**

U32 Nero / Black

**COD. Q8G00183**

C01 Bianco / White

# TOMMASO

**Dettagli / Details**

- Bottoni estraibili
- Taschino portapenne sulla manica

- Removable buttons
- Pen pocket on sleeve

**Taglie / Sizes**

XS ÷ 5XL Slim Fit

**COD. Q8G00185**

C01 Bianco / White

**Tessuto / Fabric**

100% cotone  
100% cotton  
185 g / m<sup>2</sup>

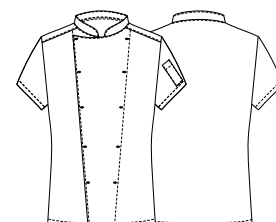


**COD. Q8G00186**

U32 Nero / Black

**Tessuto / Fabric**

65% poliestere 35% cotone  
65% polyester 35% cotton  
200 g / m<sup>2</sup>



**COD. Q8G00185**

C01 Bianco / White

**COD. Q8G00186**

U32 Nero / Black

## chef style

Pantaloni  
Pants

# PLUTONE

### Dettagli / Details

- 2 tasche
- 1 tasca sul retro
- Elastico e coulisse

- 2 pockets
- 1 rear pocket
- Elasticated waistband with drawstring

### Taglie / Sizes

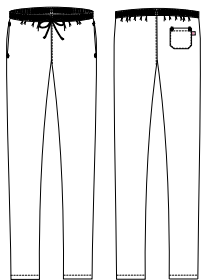
XS ÷ 5XL Slim Fit

**COD. Q8P00194**

U32 Nero / Black

### Tessuto / Fabric

65% poliestere 35% cotone  
65% polyester 35% cotton  
200 g / m<sup>2</sup>





## PLUTONE

### Dettagli / Details

- 2 tasche
- 1 tasca sul retro
- Elastico e coulisse

- 2 pockets
- 1 rear pocket
- Elasticated waistband with drawstring

### Taglie / Sizes

XS ÷ 5XL Slim Fit

**COD. Q8P00195**

Q32 - Quadro nero / Black check

### Tessuto / Fabric

100% cotone  
100% cotton  
200 g / m<sup>2</sup>

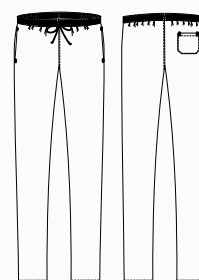


**COD. Q8P00193**

C01 Bianco / White

### Tessuto / Fabric

100% cotone  
100% cotton  
185 g / m<sup>2</sup>



## chef style

Pantaloni  
Pants



## ENRICO

### Dettagli / Details

- 2 tasche
- 1 tasca sul retro
- Elastico e coulisse
- Chiusura zip

- 2 pockets
- 1 rear pocket
- Elasticated waistband with drawstring
- Zip fly

### Taglie / Sizes

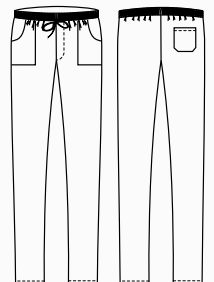
XS ÷ 5XL Regular Fit

**COD. Q8PX0108**

Art. 11P08P20  
G32 Gessato nero / Black  
G12 Gessato grigio / Grey

### Tessuto / Fabric

70% cotone 30% poliestere  
70% cotton 30% polyester  
145 g / m<sup>2</sup>





## ENRICO

### Dettagli / Details

- 2 tasche
- 1 tasca sul retro
- Elastico e coulisse
- Chiusura zip

- 2 pockets
- 1 rear pocket
- Elasticated waistband with drawstring
- Zip fly

### Taglie / Sizes

XS ÷ 5XL Regular Fit

**COD. Q8PX0108**

Art. 11P08P20

G48 Gessato blu / Blue

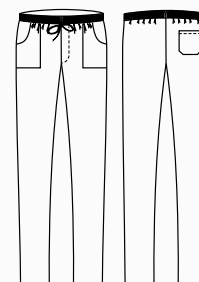
G35 Gessato bordeaux / Burgundy

### Tessuto / Fabric

70% cotone 30% poliestere

70% cotton 30% polyester

145 g / m<sup>2</sup>





## ENRICO

### Dettagli / Details

- 2 tasche
- 1 tasca sul retro
- Elastico e coulisse in vita
- Chiusura zip

- 2 pockets
- 1 rear pocket
- Elasticated waistband with drawstring
- Zip fly

### Taglie / Sizes

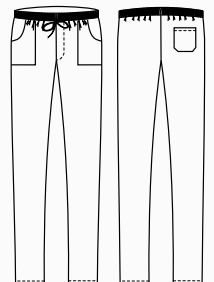
XS ÷ 5XL Regular Fit

**COD. Q8PX0109**

Art. 19P08P20  
R32 Rigato nero / *Striped black*  
R12 Rigato grigio / *Striped grey*

### Tessuto / Fabric

100% cotone  
100% cotton  
140 g / m<sup>2</sup>







## GIOVE

### Dettagli / Details

- 2 tasche
- 2 tasche sul retro
- Elastico in vita
- 1 bottone
- Chiusura zip
- Passanti cintura
- Inserto in rete traspirante

- 2 pockets
- 2 rear pockets
- Elasticated waistband
- 1 button
- Zip fly
- Belt loops
- Network fabric panel

### Taglie / Sizes

XS ÷ 4XL Slim Fit

**COD. Q8PX0114**

Art. 19P08P109

J32 Jeans nero / *Black jeans*

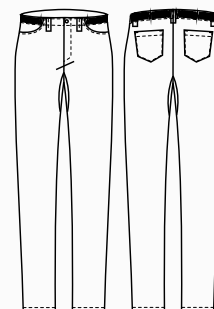
J02 Jeans grigio / *Grey jeans*

### Tessuto / Fabric

75% cotone 23% poliestere 2% elastan

75% cotton 23% polyester 2% elastane

210 g / m<sup>2</sup>



## chef style

Pantaloni

Pants

# BRUCE

### Dettagli / Details

- 2 tasche - Rete all over
- Elastico e coulisse

- 2 pockets - Network fabric all over
- Elasticated waistband with drawstring

### Taglie / Sizes

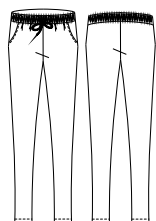
XS ÷ 4XL Slim Fit

**COD. Q8PX0115**

Art. 20P08P186  
U32 Nero / Black

### Tessuto / Fabric

100% poliestere / polyester  
160 g / m<sup>2</sup>



**COD. Q8PX0115**

Art. 20P08P186  
U32 Nero / Black



**COD. Q8PX0110**

Art. 20P08P185  
U32 Nero / Black



# NOAH

### Dettagli / Details

- 2 tasche - 1 tasca sul retro
- Elastico e coulisse

- 2 pockets - 1 rear pocket
- Elasticated waistband with drawstring

**COD. Q8PX0110**

Art. 20P08P185  
U32 Nero / Black

### Tessuto / Fabric

62% cotone 35% poliestere 3% elasthan  
62% cotton 35% polyester 3% elastane  
180 g / m<sup>2</sup>

### Taglie / Sizes

XS ÷ 4XL Slim Fit

**COD. Q8PX0111**

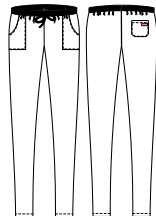
Art. 20P08P184  
Z41 Tortora / Toupe  
M12 Grigio / Grey

### Tessuto / Fabric

65% poliestere 35% cotone  
65% polyester 35% cotton  
115 g / m<sup>2</sup>

### Taglie / Sizes

S ÷ 4XL Slim Fit



ULTRA  
LIGHT

**COD. Q8PX0111**

Art. 20P08P184  
Z41 Tortora / Toupe



ULTRA  
LIGHT

**COD. Q8PX0111**

Art. 20P08P184  
M12 Grigio / Grey





## ALAN

### Dettagli / Details

- 2 tasche
- 1 tasca sul retro
- Elastico e coulisse

- 2 pockets
- 1 rear pocket
- Elasticated waistband with drawstring

### Taglie / Sizes

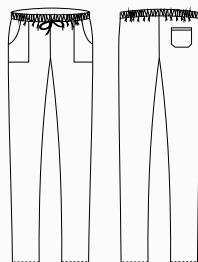
XS ÷ XXXL Slim Fit

**COD. Q8PX012**

Art. 14P08P477  
F05 Menu nero / Black menu

### Tessuto / Fabric

100% cotone / cotton  
168 g / m<sup>2</sup>



## ATENE

### Dettagli / Details

- 2 tasche - 1 tasca sul retro
- Elastico e coulisse
- Chiusura zip

- 2 pockets - 1 rear pocket
- Elasticated waistband with drawstring
- Zip fly

### Taglie / Sizes

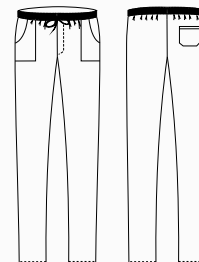
XS ÷ 4XL Regular Fit

**COD. Q8PX013**

Art. 10M1532  
F04 Peperoncino / Chili

### Tessuto / Fabric

100% cotone / cotton  
168 g / m<sup>2</sup>



## chef style

Grembiuli  
Aprons



## PARIGI

### Dettagli / Details

- Stampato  
- 1 tasca

- Printed fabric  
- 1 pocket

### Taglie / Sizes

Taglia unica / One size

### Misure / Dimensions

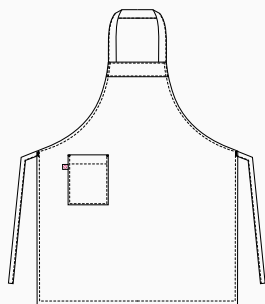
90x70 cm

**COD. Q8HX0120**

Art. 19P08H478  
F14 Travel / Travel

### Tessuto / Fabric

100% cotone / cotton  
168 g / m<sup>2</sup>



## ZAGABRIA

### Dettagli / Details

- Stampato  
- 1 tasca

- Printed fabric  
- 1 pocket

### Taglie / Sizes

Taglia unica / One size

### Misure / Dimensions

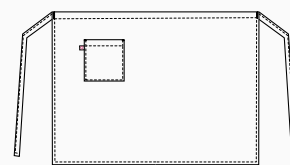
70x70 cm

**COD. Q8HX0121**

Art. 19P08H480  
F14 Travel / Travel

### Tessuto / Fabric

100% cotone / cotton  
168 g / m<sup>2</sup>





## PARIGI

### Dettagli / Details

- Stampato - 1 tasca
- Printed fabric - 1 pocket

Misure / Dimensions 90x70 cm

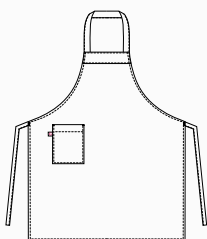
Taglie / Sizes Taglia unica / One size

**COD. Q8HX0117**

Art. 14P08H478  
F05 Menu nero / Black menu

### Tessuto / Fabric

100% cotone / cotton - 168 g / m<sup>2</sup>



## ZAGABRIA

### Dettagli / Details

- Stampato - 1 tasca
- Printed fabric - 1 pocket

Misure / Dimensions 70x70 cm

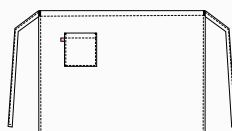
Taglie / Sizes Taglia unica / One size

**COD. Q8HX0118**

Art. 14P08H480  
F05 Menu nero / Black menu

### Tessuto / Fabric

100% cotone / cotton - 168 g / m<sup>2</sup>



## LONDON

### Dettagli / Details

- Scamiciato - Coperto dietro
- 1 grande tasca
- Pinafore - Covered backside
- 1 big pocket

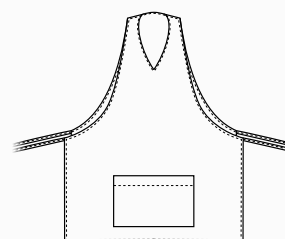
Taglie / Sizes Taglia unica / One size

**COD. Q8HX0119**

Art. 14P08H479  
F05 Menu nero / Black menu

### Tessuto / Fabric

100% cotone / cotton - 168 g / m<sup>2</sup>



## chef style

Grembiuli

Aprons

# GIUNONE

### Dettagli / Details

- Baschina per nascondere il laccio
- *Basque to hide the string*

### Taglie / Sizes

Taglia unica / One size

Misure / Dimensions 90x100 cm

**COD. Q8H00196**

C01 Bianco / White  
P50 ITA / ITA

### Tessuto / Fabric

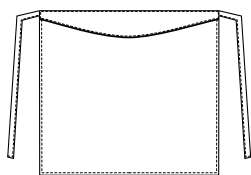
100% cotone  
100% cotton  
185 g / m<sup>2</sup>

**COD. Q8H00197**

U32 Nero / Black

### Tessuto / Fabric

65% poliestere 35% cotone  
65% polyester 35% cotton  
200 g / m<sup>2</sup>



**COD. Q8H00196**

C01 Bianco / White



**COD. Q8H00196**

P50 ITA / ITA



# OMERO

### Dettagli / Details

- 1 portapenne
- 1 pen pocket

Taglie / Sizes Taglia unica / One size

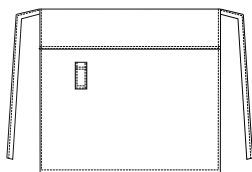
Misure / Dimensions 90x90 cm

**COD. Q8HX0116**

Art. 19P08H108  
J32 Jeans nero / Black jeans

### Tessuto / Fabric

75% cotone 23% poliestere 2% elastan  
75% cotton 23% polyester 2% elastane  
210 g / m<sup>2</sup>



**COD. Q8H00197**

U32 Nero / Black



**COD. Q8HX0116**

Art. 19P08H108  
J32 Jeans nero / Black jeans





**COD. Q8H00201**

U32 Nero / Black

65% poliestere 35% cotone  
65% polyester 35% cotton  
200 g / m<sup>2</sup>



**COD. Q8H00200**

C01 Bianco / White

100% cotone  
100% cotton  
185 g / m<sup>2</sup>



## ANCONA

**Dettagli / Details**

- 1 tasca  
- 1 pocket

**Taglie / Sizes** Taglia unica / One size

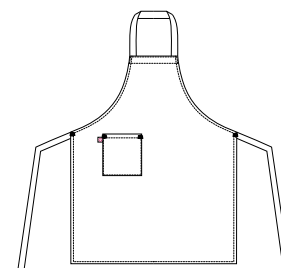
**Misure / Dimensions** 100x73 cm

**COD. Q8H00201**

U32 Nero / Black

**COD. Q8H00200**

C01 Bianco / White



## MATERA

**Dettagli / Details**

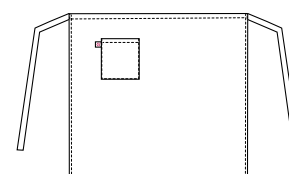
- 1 tasca  
- 1 pocket

**Taglie / Sizes** Taglia unica / One size

**Misure / Dimensions** 75x105 cm

**COD. Q8H00199**

C01 Bianco / White



**COD. Q8H00199**

C01 Bianco / White

100% cotone  
100% cotton  
185 g / m<sup>2</sup>



**COD. Q8H00198**

C01 Bianco / White

100% cotone  
100% cotton  
185 g / m<sup>2</sup>



## BARI

**Dettagli / Details**

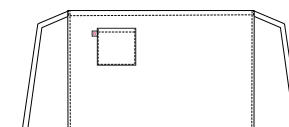
- 1 tasca  
- 1 pocket

**Taglie / Sizes** Taglia unica / One size

**Misure / Dimensions** 45x80 cm

**COD. Q8H00198**

C01 Bianco / White



## accessori

Toque

Toque

# KLIMT

### Dettagli / Details

- Regolabile con elastico
- Adjustable with elastic

### Taglie / Sizes

Taglia unica / One size

**COD. Q5100203**

C01 Bianco / White  
P50 ITA / ITA

### Tessuto / Fabric

100% cotone / cotton  
185 g / m<sup>2</sup>

**COD. Q5100204**

U32 Nero / Black

### Tessuto / Fabric

65% poliestere 35% cotone  
65% polyester 35% cotton  
200 g / m<sup>2</sup>

# CAPPELLO SCUOLA

### Taglie / Sizes

Taglia unica / One size

**COD. Q5100202**

C01 Bianco / White

### Tessuto / Fabric

100% cotone / cotton  
185 g / m<sup>2</sup>



**COD. Q51X0217**

Art. 10M416  
F04 Peperoncino / Chili



**COD. Q51X0122**

Art. 14P051483  
F05 Menu nero / Black menu



**COD. Q5100205**

C01 Bianco / White



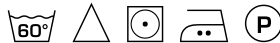
**COD. Q5100206**

U32 Nero / Black



**COD. Q5100203**

C01 Bianco / White



Confezioni da 2 pezzi / 2 pieces pack



**COD. Q5100203**

P50 ITA / ITA



Confezioni da 2 pezzi / 2 pieces pack



**COD. Q5100204**

U32 Nero / Black



Confezioni da 2 pezzi / 2 pieces pack



**COD. Q5100202**

C01 Bianco / White



Confezioni da 2 pezzi / 2 pieces pack

# TOQUE

### Taglie / Sizes

Taglia unica / One size

**COD. Q51X0217**

Art. 10M416

**COD. Q51X0122**

Art. 14P051483

### Tessuto / Fabric

100% cotone / cotton  
168 g / m<sup>2</sup>

# MONET

### Taglie / Sizes

Taglia unica / One size

**COD. Q5100205**

C01 Bianco / White

### Tessuto / Fabric

100% cotone / cotton  
185 g / m<sup>2</sup>

**COD. Q5100206**

U32 Nero / Black

### Tessuto / Fabric

65% poliestere 35% cotone  
65% polyester 35% cotton  
200 g / m<sup>2</sup>





**COD. R051**

Bianco / White



**COD. R001**

Bianco / White



## COPRICAPO

**Taglie / Sizes**  
Taglia unica / One size

**COD. R051**

Bianco / White

**Tessuto 1 / Fabric 1**  
100% cotone / cotton

**Tessuto 2 / Fabric 2**  
Rete 100% poliestere  
Network fabric 100% polyester

**COD. R001**

Bianco / White

**Tessuto 1 / Fabric 1**  
100% cotone / cotton

**Tessuto 2 / Fabric 2**  
Rete 100% poliestere  
Network fabric 100% polyester



**COD. R100**



**COD. R100**



**COD. R100**

COD. R100: venduto in confezioni da 6 pezzi. Articolo aleatorio: non è possibile scegliere l'assortimento colore.  
COD. R100: 6 pieces pack. Random color: the choice of the color is not allowed.



## TORCIONE

**Misure / Dimensions**  
56X80 cm

**COD. R100**

Colori assortiti / Assorted colors

**Tessuto / Fabric**  
100% cotone / cotton

## ANDY TRIANGOLO CUOCO

**COD. Q5100265**

C01 Bianco / White

**Misure / Dimensions**  
Lunghezza / Length cm 95

**Tessuto / Fabric**  
100% cotone / cotton  
185 g / m<sup>2</sup>

**COD. Q5100266**

U32 Nero / Black

**Misure / Dimensions**  
Lunghezza / Length cm 95

**Tessuto / Fabric**  
65% poliestere 35% cotone  
65% polyester 35% cotton  
200 g / m<sup>2</sup>



**COD. Q5100265**

C01 Bianco / White



Confezioni da 4 pezzi / 4 pieces pack



**COD. Q5100266**

U32 Nero / Black



Confezioni da 2 pezzi / 2 pieces pack

## FOULARD CUOCO

**COD. R140**

Bianco / White

**Misure / Dimensions**  
Lunghezza / Length cm 95

**Tessuto / Fabric**  
100% cotone / cotton  
140 g / m<sup>2</sup>



**COD. R140**

Bianco / White



## accessori

Bandana  
Bandana

# BANDANA

### Dettagli / Details

- Con fascia tergisudore  
- With sweeper band

### Taglie / Sizes

Taglia unica / One size

**\*COD. Q5IX0126**

Art. 19P051865  
U35 Bordeaux / Burgundy



**\*COD. Q5IX0126**

\*Art. 19P051865  
U35 Bordeaux / Burgundy



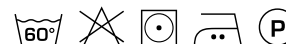
**\*COD. Q5IX0125**

\*Art. 22P051865  
Z48 Blu / Blue



**\*COD. Q5IX0125**

\*Art. 22P051865  
Z44 Marrone / Brown



**\*COD. Q5IX0125**

Art. 22P051865  
Z48 Blu / Blue  
Z44 Marrone / Brown

**\*COD. Q5IX0124**

Art. 20P051865  
Z41 Tortora / Toupe  
Z43 Verde militare / Military green



**\*COD. Q5IX0124**

\*Art. 20P051865  
Z41 Tortora / Toupe



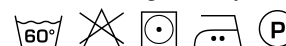
**\*COD. Q5IX0124**

\*Art. 20P051865  
Z43 Verde militare / Military green



**\*COD. Q5IX0123**

\*Art. 17P051865  
C02 Grigio / Grey



**\*COD. Q5IX0123**

Art. 17P051865  
C02 Grigio / Grey

### Tessuto / Fabric

65% poliestere 35% cotone  
65% polyester 35% cotton  
200 g / m<sup>2</sup>

**\*COD. Q5IX0128**

Art. 10M443  
F04 Peperoncino / Chili



**\*COD. Q5IX0128**

\*Art. 10M443  
F04 Peperoncino / Chili



**\*COD. Q5IX0127**

\*Art. 14P051481  
F05 Menu nero / Black menu



**\*COD. Q5IX0127**

Art. 14P051481  
F05 Menu nero / Black menu

### Tessuto / Fabric

100% cotone  
100% cotton  
168 g / m<sup>2</sup>

**COD. Q5I00263**

U32 Nero / Black  
C01 Bianco / White

### Tessuto / Fabric

65% poliestere 35% cotone  
65% polyester 35% cotton  
143 g / m<sup>2</sup>



**COD. Q5I00263**

U32 Nero / Black



**COD. Q5I00263**

C01 Bianco / White



**\*CON FASCIA TERGISUDORE**  
**\*WITH SWEEPER BAND**



**\*COD. Q5IX0123**

Art. 17P05I865  
C02 Grigio / Grey

## STELVIO CALZATURA ALIMENTARE

### Tomaia / Upper

- Microfibra idrorepellente
- Puntale in composito

- *Water repellent microfiber*
- *Composite toe cap*

**COD. SSVL114**

### Taglie / Sizes

36 ÷ 47

**CE** Certificazione CE / CE Certification  
EN 20345 S2 SRC



Bianco / White

## MINORCA SABOT

### Tomaia / Upper

- Fibertex
- Puntale in composito

- *Fibertex*
- *Composite toe cap*

**COD. SSEX115**

### Taglie / Sizes

35 ÷ 48

**CE** Certificazione CE / CE Certification  
EN20345 SB E A SRC



Bianco / White

## LANZAROTE SABOT

### Tomaia / Upper

- Fibertex
- Puntale in composito

- *Fibertex*
- *Composite toe cap*

**COD. SSEX116**

### Taglie / Sizes

35 ÷ 48

**CE** Certificazione CE / CE Certification  
EN 20345 SB E A SRC



Nero / Black



**CE** Certificazione CE / CE Certification  
EN 20347 E A FO SRA

## ZOCCOLO POLIURETANO

**Tomaia / Upper**  
- Pelle traforata traspirante  
- Breathable perforated leather

**COD. SSZ0005**

**(DONNA/WOMAN)**

**Taglie / Sizes**  
35 ÷ 40

**COD. SSZ0006**

**(UOMO/MAN)**

**Taglie / Sizes**  
41 ÷ 46



**CE** Certificazione CE / CE Certification  
EN 20347 E A FO SRA

## ZOCCOLO POLIURETANO CON LACCETTO

**Tomaia / Upper**  
- Pelle traforata traspirante  
- Breathable perforated leather

**COD. SSZ0007**

**(DONNA/WOMAN)**

**Taglie / Sizes**  
35 ÷ 40

**COD. SSZ0008**

**(UOMO/MAN)**

**Taglie / Sizes**  
41 ÷ 46



Grembiule  
**LIONE**  
pag. 49

Grembiule  
**SCOTLAND**  
pag. 49





## NAPOLI

### Dettagli / Details

- 1 tasca

- 1 pocket

### Taglie / Sizes

Taglia unica / One size

### Misure / Dimensions

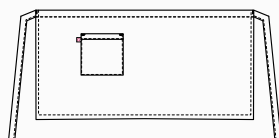
43x70 cm

**COD. Q1HX0129**

Art. 20P01H147  
D21 Beige / Beige

### Tessuto / Fabric

100% poliestere / polyester  
170 g / m<sup>2</sup>



## RENO

### Dettagli / Details

- 2 tasche - 1 taschino portapenne  
- Allacciatura collo regolabile con bottoni

- 2 pockets - 1 pen pocket

- Adjustable halter with buttons

### Taglie / Sizes

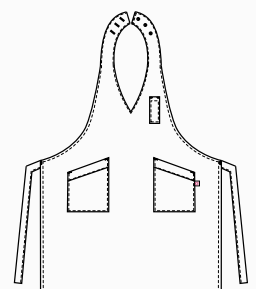
Taglia unica / One size

**COD. Q1HX0130**

Art. 20P01H158  
D21 Beige / Beige

### Tessuto / Fabric

100% poliestere / polyester  
170 g / m<sup>2</sup>







## LIONE

### Dettagli / Details

- 1 tasca

- 1 pocket

### Taglie / Sizes

Taglia unica / One size

### Misure / Dimensions

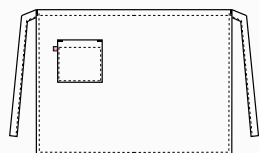
70x98 cm

**COD. Q1HX0131**

Art. 20P01H159  
D21 Beige / Beige

### Tessuto / Fabric

100% poliestere / polyester  
170 g / m<sup>2</sup>



## SCOTLAND

### Dettagli / Details

- 1 grande tasca - 1 taschino portapenne  
- Allacciatura collo regolabile con bottoni

- 1 big pocket - 1 pen pocket  
- Adjustable halter with buttons

### Taglie / Sizes

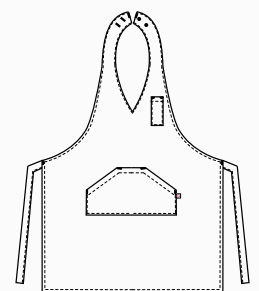
Taglia unica / One size

**COD. Q1HX0132**

Art. 20P01H2055  
D21 Beige / Beige

### Tessuto / Fabric

100% poliestere / polyester  
170 g / m<sup>2</sup>





## NAPOLI

### Dettagli / Details

- 1 tasca

- 1 pocket

### Taglie / Sizes

Taglia unica / One size

### Misure / Dimensions

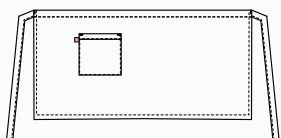
43x70 cm

**COD. Q1HX0129**

Art. 20P01H147  
C02 Grigio / Grey

### Tessuto / Fabric

100% poliestere / polyester  
170 g / m<sup>2</sup>



## RENO

### Dettagli / Details

- 2 tasche - 1 taschino portapenne  
- Allacciatura collo regolabile con bottoni

- 2 pockets - 1 pen pocket

- Adjustable halter with buttons

### Taglie / Sizes

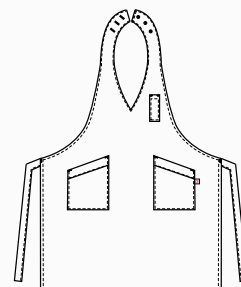
Taglia unica / One size

**COD. Q1HX0130**

Art. 20P01H158  
C02 Grigio / Grey

### Tessuto / Fabric

100% poliestere / polyester  
170 g / m<sup>2</sup>





## LIONE

### Dettagli / Details

- 1 tasca

- 1 pocket

### Taglie / Sizes

Taglia unica / One size

### Misure / Dimensions

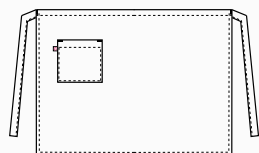
70x98 cm

**COD. Q1HX0131**

Art. 20P01H159  
C02 Grigio / Grey

### Tessuto / Fabric

100% poliestere / polyester  
170 g / m<sup>2</sup>



## SCOTLAND

### Dettagli / Details

- 1 grande tasca - 1 taschino portapenne  
- Allacciatura collo regolabile con bottoni

- 1 big pocket - 1 pen pocket  
- Adjustable halter with buttons

### Taglie / Sizes

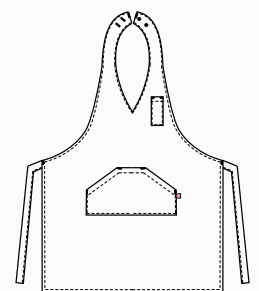
Taglia unica / One size

**COD. Q1HX0132**

Art. 20P01H2055  
C02 Grigio / Grey

### Tessuto / Fabric

100% poliestere / polyester  
170 g / m<sup>2</sup>





## NAPOLI

### Dettagli / Details

- 1 tasca

- 1 pocket

### Taglie / Sizes

Taglia unica / One size

### Misure / Dimensions

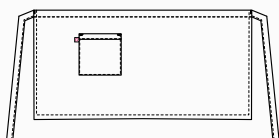
43x70 cm

**COD. Q1HX0129**

Art. 20P01H147  
Z44 Marrone / Brown

### Tessuto / Fabric

100% poliestere / polyester  
170 g / m<sup>2</sup>



## RENO

### Dettagli / Details

- 2 tasche - 1 taschino portapenne  
- Allacciatura collo regolabile con bottoni

- 2 pockets - 1 pen pocket  
- Adjustable halter with buttons

### Taglie / Sizes

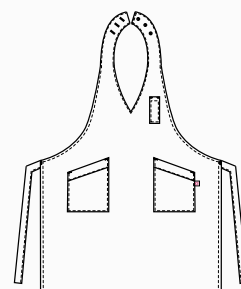
Taglia unica / One size

**COD. Q1HX0130**

Art. 20P01H158  
Z44 Marrone / Brown

### Tessuto / Fabric

100% poliestere / polyester  
170 g / m<sup>2</sup>





## LIONE

### Dettagli / Details

- 1 tasca

- 1 pocket

### Taglie / Sizes

Taglia unica / One size

### Misure / Dimensions

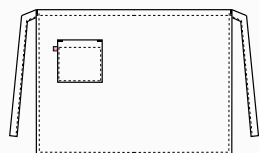
70x98 cm

**COD. Q1HX0131**

Art. 20P01H159  
Z44 Marrone / Brown

### Tessuto / Fabric

100% poliestere / polyester  
170 g / m<sup>2</sup>



## SCOTLAND

### Dettagli / Details

- 1 grande tasca - 1 taschino portapenne  
- Allacciatura collo regolabile con bottoni

- 1 big pocket - 1 pen pocket  
- Adjustable halter with buttons

### Taglie / Sizes

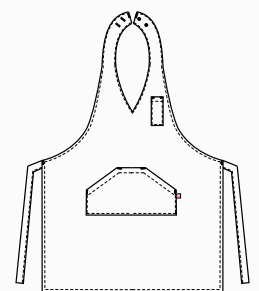
Taglia unica / One size

**COD. Q1HX0132**

Art. 20P01H2055  
Z44 Marrone / Brown

### Tessuto / Fabric

100% poliestere / polyester  
170 g / m<sup>2</sup>





Grembiule  
**SENA**  
pag. 57

Grembiule  
**RODANO**  
pag. 57



**Giblor's**  
italian worklife specialist



## NAPOLI

### Dettagli / Details

- 1 tasca

- 1 pocket

### Taglie / Sizes

Taglia unica / One size

### Misure / Dimensions

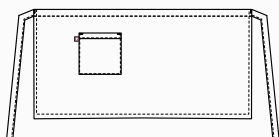
43x70 cm

**COD. Q1HX0133**

Art. 20P01H423  
G12 Gessato grigio / Grey pinstripe

### Tessuto / Fabric

99% poliestere 1% viscosa  
99% polyester 1% viscose  
170 g / m<sup>2</sup>



## RENO

### Dettagli / Details

- 2 tasche - 1 taschino portapenne  
- Allacciatura collo regolabile con bottoni

- 2 pockets - 1 pen pocket  
- Adjustable halter with buttons

### Taglie / Sizes

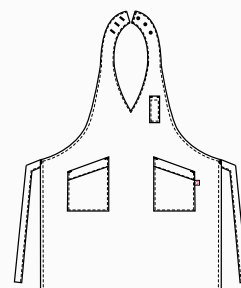
Taglia unica / One size

**COD. Q1HX0134**

Art. 20P01H152  
G12 Gessato grigio / Grey pinstripe

### Tessuto / Fabric

99% poliestere 1% viscosa  
99% polyester 1% viscose  
170 g / m<sup>2</sup>







## SENNA

### Dettagli / Details

- 2 tasche
- Allacciatura collo regolabile con bottoni

- 2 pockets
- Adjustable halter with buttons

### Taglie / Sizes

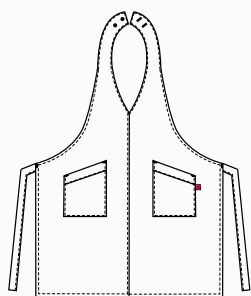
Taglia unica / One size

**COD. Q1HX0135**

Art. 20P01H153  
G12 Gessato grigio / Grey pinstripe

### Tessuto / Fabric

99% poliestere 1% viscosa  
99% polyester 1% viscose  
170 g / m<sup>2</sup>



## RODANO

### Dettagli / Details

- 1 tasca

- 1 pocket

### Taglie / Sizes

Taglia unica / One size

### Misure / Dimensions

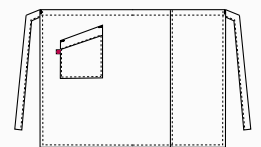
70x98 cm

**COD. Q1HX0136**

Art. 20P01H154  
G12 Gessato grigio / Grey pinstripe

### Tessuto / Fabric

99% poliestere 1% viscosa  
99% polyester 1% viscose  
170 g / m<sup>2</sup>





## NAPOLI

### Dettagli / Details

- 1 tasca

- 1 pocket

### Taglie / Sizes

Taglia unica / One size

### Misure / Dimensions

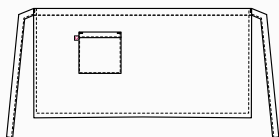
43x70 cm

**COD. Q1HX0133**

Art. 20P01H423  
G32 Gessato nero / Black pinstripe

### Tessuto / Fabric

99% poliestere 1% viscosa  
99% polyester 1% viscose  
170 g / m<sup>2</sup>



## RENO

### Dettagli / Details

- 2 tasche - 1 taschino portapenne  
- Allacciatura collo regolabile con bottoni

- 2 pockets - 1 pen pocket  
- Adjustable halter with buttons

### Taglie / Sizes

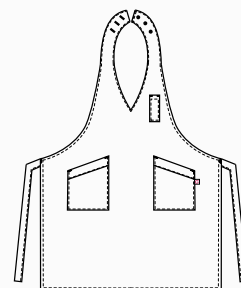
Taglia unica / One size

**COD. Q1HX0134**

Art. 20P01H152  
G32 Gessato nero / Black pinstripe

### Tessuto / Fabric

99% poliestere 1% viscosa  
99% polyester 1% viscose  
170 g / m<sup>2</sup>





## SENNA

### Dettagli / Details

- 2 tasche
- Allacciatura collo regolabile con bottoni
- 2 pockets
- Adjustable halter with buttons

### Taglie / Sizes

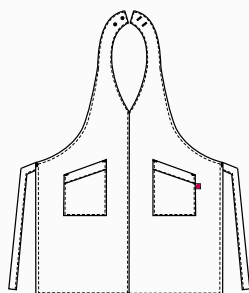
Taglia unica / One size

**COD. Q1HX0135**

Art. 20P01H153  
G32 Gessato nero / Black pinstripe

### Tessuto / Fabric

99% poliestere 1% viscosa  
99% polyester 1% viscose  
170 g / m<sup>2</sup>



## RODANO

### Dettagli / Details

- 1 tasca
- 1 pocket

### Taglie / Sizes

Taglia unica / One size

### Misure / Dimensions

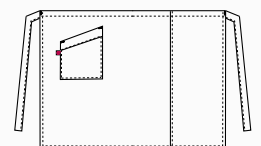
70x98 cm

**COD. Q1HX0136**

Art. 20P01H154  
G32 Gessato nero / Black pinstripe

### Tessuto / Fabric

99% poliestere 1% viscosa  
99% polyester 1% viscose  
170 g / m<sup>2</sup>





## NAPOLI

### Dettagli / Details

- 1 tasca

- 1 pocket

### Taglie / Sizes

Taglia unica / One size

### Misure / Dimensions

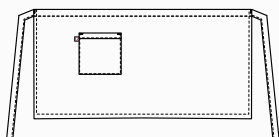
43x70 cm

**COD. Q1HX0133**

Art. 20P01H423  
G35 Gessato bordeaux  
G35 Burgundy pinstripes

### Tessuto / Fabric

99% poliestere 1% viscosa  
99% polyester 1% viscose  
170 g / m<sup>2</sup>



## RENO

### Dettagli / Details

- 2 tasche - 1 taschino portapenne  
- Allacciatura collo regolabile con bottoni

- 2 pockets - 1 pen pocket  
- Adjustable halter with buttons

### Taglie / Sizes

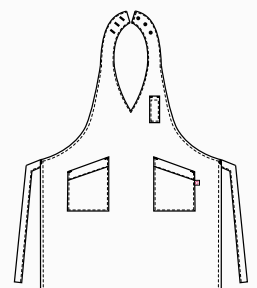
Taglia unica / One size

**COD. Q1HX0134**

Art. 20P01H152  
G35 Gessato bordeaux  
G35 Burgundy pinstripes

### Tessuto / Fabric

99% poliestere 1% viscosa  
99% polyester 1% viscose  
170 g / m<sup>2</sup>





## SENNA

### Dettagli / Details

- 2 tasche
- Allacciatura collo regolabile con bottoni

- 2 pockets
- Adjustable halter with buttons

### Taglie / Sizes

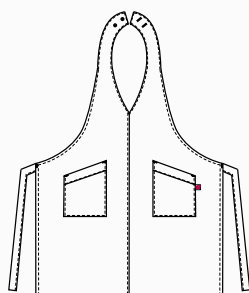
Taglia unica / One size

**COD. Q1HX0135**

Art. 20P01H153  
G35 Gessato bordeaux  
G35 Burgundy pinstripes

### Tessuto / Fabric

99% poliestere 1% viscosa  
99% polyester 1% viscose  
170 g / m<sup>2</sup>



## RODANO

### Dettagli / Details

- 1 tasca

- 1 pocket

### Taglie / Sizes

Taglia unica / One size

### Misure / Dimensions

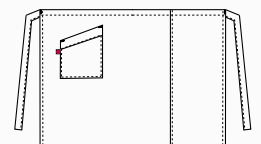
70x98 cm

**COD. Q1HX0136**

Art. 20P01H154  
G35 Gessato bordeaux  
G35 Burgundy pinstripes

### Tessuto / Fabric

99% poliestere 1% viscosa  
99% polyester 1% viscose  
170 g / m<sup>2</sup>





## MANCHESTER

### Dettagli / Details

- 3 tasche - Taschino portapenne
- Allacciatura collo regolabile
- Anello porta torcione

- 3 pockets - Pen pocket
- Adjustable halter
- Cloth ring

### Taglie / Sizes

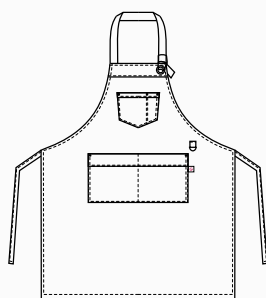
Taglia unica / One size

**COD. Q1HX0137**

Art. 18P01H019  
U32 Nero / Black

### Tessuto / Fabric

65% poliestere 35% cotone  
65% polyester 35% cotton  
200 g / m<sup>2</sup>



## LUNA

### Dettagli / Details

- 2 tasche - Taschino portapenne
- Allacciatura collo regolabile con velcro

- 2 pockets
- Pen pocket
- Adjustable halter with velcro

### Taglie / Sizes

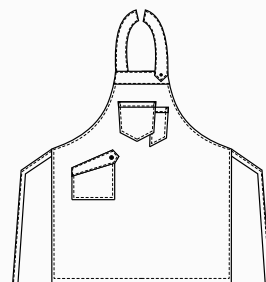
Taglia unica / One size

**COD. Q1HX0138**

Art. 18P01H020  
U32 Nero / Black

### Tessuto / Fabric

65% poliestere 35% cotone  
65% polyester 35% cotton  
200 g / m<sup>2</sup>





## DOUGLAS

### Dettagli / Details

- 3 tasche
- 2 taschini portapenne
- Allacciatura collo regolabile

- 3 pockets
- 2 pen pockets
- Adjustable halter

### Taglie / Sizes

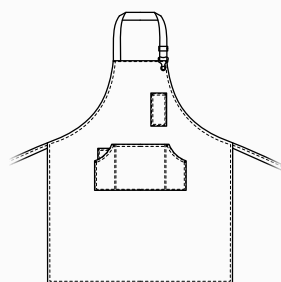
Taglia unica / One size

**COD. Q1HX0141**

Art. 18P01H013  
J48 Jeans blu / Jeans blue

### Tessuto / Fabric

100% cotone  
100% cotton  
260 g / m<sup>2</sup>



## SHANNON

### Dettagli / Details

- 3 tasche
- Taschino portapenne

- 3 pockets
- 1 pen pocket

### Taglie / Sizes

Taglia unica / One size

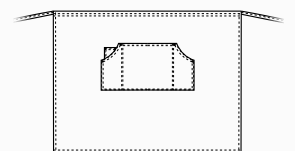
Misure / Dimensions 70x80 cm

**COD. Q1HX0142**

Art. 18P01H014  
J48 Jeans blu / Jeans blue

### Tessuto / Fabric

100% cotone  
100% cotton  
260 g / m<sup>2</sup>



# CALIFORNIA

## Dettagli / Details

- 2 tasche
- 2 taschini portapenne
- Allacciatura collo regolabile

- 2 pockets
- 2 pen pockets
- Adjustable halter

## Taglie / Sizes

Taglia unica / One size

**COD. Q1HX0139**

Art. 19P01H072

J48 Jeans blu / Jeans blue

## Tessuto 1 / Fabric 1

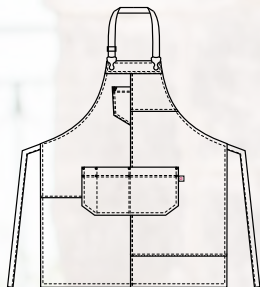
100% cotone  
100% cotton  
260 g / m<sup>2</sup>

## Tessuto 2 / Fabric 2

100% poliestere  
100% polyester  
160 g / m<sup>2</sup>

## Tessuto 3 / Fabric 3

92% poliestere 8% elastan  
92% poliestere 8% elastane  
247 g / m<sup>2</sup>





# KANSAS

## Dettagli / Details

- 2 tasche  
- Allacciatura collo regolabile

- 2 pockets  
- Adjustable halter

## Taglie / Sizes

Taglia unica / One size

**COD. Q1HX0140**

Art. 19P01H073  
J48 Jeans blu / Jeans blue

### Tessuto 1 / Fabric 1

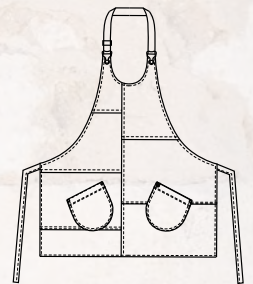
100% cotone  
100% cotton  
260 g / m<sup>2</sup>

### Tessuto 2 / Fabric 2

100% poliestere  
100% polyester  
160 g / m<sup>2</sup>

### Tessuto 3 / Fabric 3

92% poliestere 8% elasthan  
92% polyester 8% elastane  
247 g / m<sup>2</sup>



# NIZZA

## Dettagli / Details

- 2 tasche
- 1 taschino portapenne
- Allacciatura collo regolabile
- Anello porta torcione

- 2 pockets
- 1 pen pocket
- Adjustable halter
- Cloth ring

## Taglie / Sizes

Taglia unica / One size

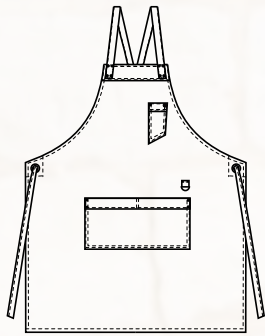
**COD. Q1HX0143**

Art. 19P01H071

J32 Jeans nero / Black jeans

## Tessuto / Fabric

75% cotone 23% poliestere 2% elasthan  
75% cotton 23% polyester 2% elastane  
210 g / m<sup>2</sup>



# LUNA

## Dettagli / Details

- 2 tasche  
- Allacciatura collo regolabile  
con velcro

- 2 pockets  
- Adjustable halter with velcro

## Taglie / Sizes

Taglia unica / One size

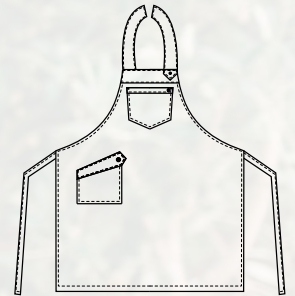
**COD. Q1HX0144**

Art. 19P01H069

J32 Jeans nero / Black jeans

## Tessuto / Fabric

75% cotone 23% poliestere 2% elasthan  
75% cotton 23% polyester 2% elastane  
210 g / m<sup>2</sup>



# ZANTE

## Dettagli / Details

- 2 grandi tasche
- Allacciatura collo regolabile

- 2 big pockets
- Adjustable halter

## Taglie / Sizes

Taglia unica / One size

## Misure / Dimensions

66x92 cm

**COD. Q1H00212**

C02 Grigio chiaro / Light grey

U32 Nero / Black

U35 Bordeaux / Bordeaux

Z41 Tortora / Taupe

Z43 Militare / Military green

Z44 Marrone / Brown

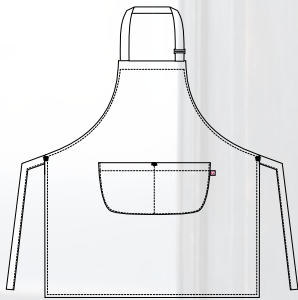
Z48 Blu / Blue

## Tessuto / Fabric

65% poliestere 35% cotone

65% polyester 35% cotton

200 g / m<sup>2</sup>



**COD. Q1H00212**

Z43 Militare / Military green



**COD. Q1H00212**

C02 Grigio chiaro / Light grey



**COD. Q1H00212**

U32 Nero / Black



**COD. Q1H00212**

U35 Bordeaux / Bordeaux



**COD. Q1H00212**

Z41 Tortora / Taupe



**COD. Q1H00212**

Z43 Militare / Military green



**COD. Q1H00212**

Z44 Marrone / Brown



**COD. Q1H00212**

Z48 Blu / Blue

## ho.re.ca. & services

Grembiuli

Aprons

# MATERA

### Dettagli / Details

- 1 tasca
- 1 pocket

### Taglie / Sizes

Taglia unica / One size

### Misure / Dimensions

75x105 cm

**COD. Q1H00213**

C02 Grigio chiaro / Light grey

U32 Nero / Black

U35 Bordeaux / Bordeaux

Z41 Tortora / Taupe

Z43 Militare / Military green

Z44 Marrone / Brown

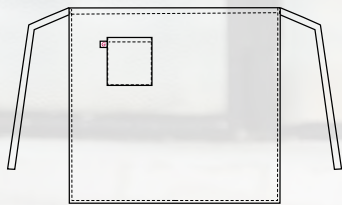
Z48 Blu / Blue

### Tessuto / Fabric

65% poliestere 35% cotone

65% polyester 35% cotton

200 g / m<sup>2</sup>



**COD. Q1H00213**

Z48 Blu / Blue



**COD. Q1H00213**

C02 Grigio chiaro / Light grey



**COD. Q1H00213**

U32 Nero / Black



**COD. Q1H00213**

U35 Bordeaux / Bordeaux



**COD. Q1H00213**

Z41 Tortora / Taupe



**COD. Q1H00213**

Z43 Militare / Military green



**COD. Q1H00213**

Z44 Marrone / Brown



**COD. Q1H00213**

Z48 Blu / Blue

# BARI

## Dettagli / Details

- 1 tasca
- 1 pocket

## Taglie / Sizes

Taglia unica / One size

## Misure / Dimensions

45x80 cm

**COD. Q1H00214**

C02 Grigio chiaro / Light grey

U32 Nero / Black

U35 Bordeaux / Bordeaux

Z41 Tortora / Taupe

Z43 Militare / Military green

Z44 Marrone / Brown

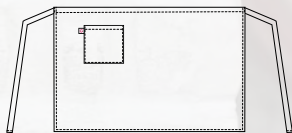
Z48 Blu / Blue

## Tessuto / Fabric

65% poliestere 35% cotone

65% polyester 35% cotton

200 g / m<sup>2</sup>



**COD. Q1H00214**

U35 Bordeaux / Bordeaux





**COD. Q1H00214**

C02 Grigio chiaro / Light grey



**COD. Q1H00214**

U32 Nero / Black



**COD. Q1H00214**

U35 Bordeaux / Bordeaux



**COD. Q1H00214**

Z41 Tortora / Taupe



**COD. Q1H00214**

Z43 Militare / Military green



**COD. Q1H00214**

Z44 Marrone / Brown



**COD. Q1H00214**

Z48 Blu / Blue

# LIPARI

## Dettagli / Details

- 1 grande tasca
- 2 taschini portapenne
- Allacciatura collo regolabile con bottoni

- 1 big pocket
- 2 pen pockets
- Adjustable halter with buttons

## Taglie / Sizes

Taglia unica / One size

## Misure / Dimensions

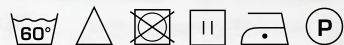
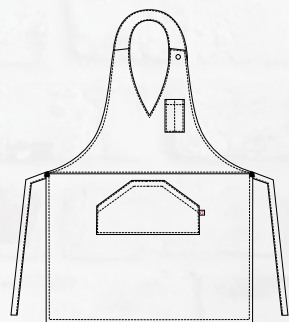
68x88 cm

**COD. Q1H00207**

U32 Nero / Black  
Z44 Marrone / Brown  
U33 Caffè / Coffee  
U35 Bordeaux / Bordeaux  
Z46 Fucsia / Fuchsia  
D25 Rosso / Red  
D24 Arancio / Orange  
C03 Giallo / Yellow  
C09 Pistacchio / Pistachio  
Z49 Verde scuro / Dark green  
Z48 Blu / Blue  
U38 Bluette / Royal  
D28 Turchese / Turquoise

## Tessuto / Fabric

100% poliestere  
100% polyester  
220 g / m<sup>2</sup>



**COD. Q1H00207**

U33 Caffè / Coffee



**COD. Q1H00207**

U32 Nero / Black



**COD. Q1H00207**

Z44 Marrone / Brown



**COD. Q1H00207**

U33 Caffè / Coffee



**COD. Q1H00207**

U35 Bordeaux / Bordeaux



**COD. Q1H00207**

Z46 Fucsia / Fuchsia



**COD. Q1H00207**

D25 Rosso / Red



**COD. Q1H00207**

D24 Arancio / Orange



**COD. Q1H00207**

C03 Giallo / Yellow



**COD. Q1H00207**

C09 Pistacchio / Pistachio



**COD. Q1H00207**

Z49 Verde scuro / Dark green



**COD. Q1H00207**

Z48 Blu / Blue



**COD. Q1H00207**

U38 Bluette / Royal



**COD. Q1H00207**

D28 Turchese / Turquoise



**COD. Q1H00210**

U32 Nero / Black



**COD. Q1H00210**

Z44 Marrone / Brown



**COD. Q1H00210**

U33 Caffè / Coffee



**COD. Q1H00210**

U35 Bordeaux / Bordeaux



**COD. Q1H00210**

Z46 Fucsia / Fuchsia



**COD. Q1H00210**

D25 Rosso / Red



**COD. Q1H00210**

D24 Arancio / Orange



**COD. Q1H00210**

C03 Giallo / Yellow



**COD. Q1H00210**

C09 Pistacchio / Pistachio



**COD. Q1H00210**

Z49 Verde scuro / Dark green



**COD. Q1H00210**

Z48 Blu / Blue



**COD. Q1H00210**

U38 Bluette / Royal



**COD. Q1H00210**

D28 Turchese / Turquoise

# POSITANO

## Dettagli / Details

- 2 tasche  
Coperto dietro

- 2 pockets  
Covered backside

## Taglie / Sizes

Taglia unica / One size

## Misure / Dimensions

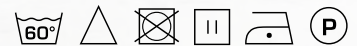
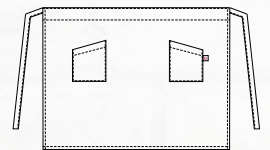
68x59 cm

**COD. Q1H00210**

U32 Nero / Black  
Z44 Marrone / Brown  
U33 Caffè / Coffee  
U35 Bordeaux / Bordeaux  
Z46 Fucsia / Fuchsia  
D25 Rosso / Red  
D24 Arancio / Orange  
C03 Giallo / Yellow  
C09 Pistacchio / Pistachio  
Z49 Verde scuro / Dark green  
Z48 Blu / Blue  
U38 Bluette / Royal  
D28 Turchese / Turquoise

## Tessuto / Fabric

100% poliestere  
100% polyester  
220 g / m<sup>2</sup>



**COD. Q1H00210**

U32 Nero / Black

## ho.re.ca. & services

Grembiuli

Aprons

# PUB

### Dettagli / Details

- 3 grandi tasche

- 3 big pockets

### Taglie / Sizes

Taglia unica / One size

### Misure / Dimensions

51x32 cm

**COD. Q1H00211**

U32 Nero / Black

Z44 Marrone / Brown

U33 Caffè / Coffee

U35 Bordeaux / Bordeaux

Z46 Fucsia / Fuchsia

D25 Rosso / Red

D24 Arancio / Orange

C03 Giallo / Yellow

C09 Pistacchio / Pistachio

Z49 Verde scuro / Dark green

Z48 Blu / Blue

U38 Bluette / Royal

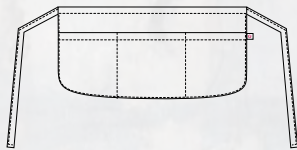
D28 Turchese / Turquoise

### Tessuto / Fabric

100% poliestere

100% polyester

220 g / m<sup>2</sup>



**COD. Q1H00211**

U32 Nero / Black



**COD. Q1H00211**

U32 Nero / Black



**COD. Q1H00211**

Z44 Marrone / Brown



**COD. Q1H00211**

U33 Caffè / Coffee



**COD. Q1H00211**

U35 Bordeaux / Bordeaux



**COD. Q1H00211**

Z46 Fucsia / Fuchsia



**COD. Q1H00211**

D25 Rosso / Red



**COD. Q1H00211**

D24 Arancio / Orange



**COD. Q1H00211**

C03 Giallo / Yellow



**COD. Q1H00211**

C09 Pistacchio / Pistachio



**COD. Q1H00211**

Z49 Verde scuro / Dark green



**COD. Q1H00211**

Z48 Blu / Blue



**COD. Q1H00211**

U38 Bluette / Royal



**COD. Q1H00211**

D28 Turchese / Turquoise

# CAPRI

## Dettagli / Details

- 2 taschini portapenne
- 2 tasche
- Allacciatura collo regolabile con bottoni

- 2 pen pockets
- 2 pockets
- Adjustable halter with buttons

## Taglie / Sizes

Taglia unica / One size

## Misure / Dimensions

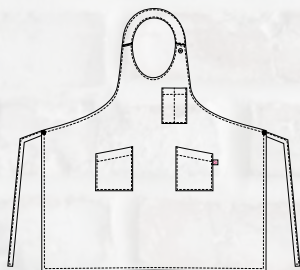
81x122,5 cm

**COD. Q1H00208**

U32 Nero / Black  
Z44 Marrone / Brown  
U33 Caffè / Coffee  
U35 Bordeaux / Bordeaux  
Z46 Fucsia / Fuchsia  
D25 Rosso / Red  
D24 Arancio / Orange  
C03 Giallo / Yellow  
C09 Pistacchio / Pistachio  
Z49 Verde scuro / Dark green  
Z48 Blu / Blue  
U38 Bluette / Royal  
D28 Turchese / Turquoise

## Tessuto / Fabric

100% poliestere  
100% polyester  
220 g / m<sup>2</sup>



**COD. Q1H00208**

U35 Bordeaux / Bordeaux





**COD. Q1H00208**

U32 Nero / Black



**COD. Q1H00208**

Z44 Marrone / Brown



**COD. Q1H00208**

U33 Caffè / Coffee



**COD. Q1H00208**

U35 Bordeaux / Bordeaux



**COD. Q1H00208**

Z46 Fucsia / Fuchsia



**COD. Q1H00208**

D25 Rosso / Red



**COD. Q1H00208**

D24 Arancio / Orange



**COD. Q1H00208**

C03 Giallo / Yellow



**COD. Q1H00208**

C09 Pistacchio / Pistachio



**COD. Q1H00208**

Z49 Verde scuro / Dark green



**COD. Q1H00208**

Z48 Blu / Blue



**COD. Q1H00208**

U38 Bluette / Royal



**COD. Q1H00208**

D28 Turchese / Turquoise

# LATINA

## Dettagli / Details

- 1 taschino portapenne
- 1 grande tasca
- Allacciatura collo regolabile con bottoni

- 1 pen pocket
- 1 big pocket
- Adjustable halter with buttons

## Taglie / Sizes

Taglia unica / One size

## Misure / Dimensions

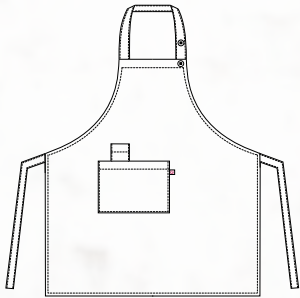
81x122,5 cm

**COD. Q1H00209**

U32 Nero / Black  
Z44 Marrone / Brown  
U33 Caffè / Coffee  
U35 Bordeaux / Bordeaux  
Z46 Fucsia / Fuchsia  
D25 Rosso / Red  
D24 Arancio / Orange  
C03 Giallo / Yellow  
C09 Pistacchio / Pistachio  
Z49 Verde scuro / Dark green  
Z48 Blu / Blue  
U38 Bluette / Royal  
D28 Turchese / Turquoise

## Tessuto / Fabric

100% poliestere  
100% polyester  
220 g / m<sup>2</sup>



**COD. Q1H00209**

D25 Rosso / Red



**COD. Q1H00209**

U32 Nero / Black



**COD. Q1H00209**

Z44 Marrone / Brown



**COD. Q1H00209**

U33 Caffè / Coffee



**COD. Q1H00209**

U35 Bordeaux / Bordeaux



**COD. Q1H00209**

Z46 Fucsia / Fuchsia



**COD. Q1H00209**

D25 Rosso / Red



**COD. Q1H00209**

D24 Arancio / Orange



**COD. Q1H00209**

C03 Giallo / Yellow



**COD. Q1H00209**

C09 Pistacchio / Pistachio



**COD. Q1H00209**

Z49 Verde scuro / Dark green



**COD. Q1H00209**

Z48 Blu / Blue



**COD. Q1H00209**

U38 Bluette / Royal



**COD. Q1H00209**

D28 Turchese / Turquoise



**COD. Q5100215**

U32 Nero / Black



**COD. Q5100215**

Z44 Marrone / Brown



**COD. Q5100215**

U33 Caffè / Coffee



**COD. Q5100215**

U35 Bordeaux / Bordeaux



**COD. Q5100215**

Z46 Fucsia / Fuchsia



**COD. Q5100215**

D25 Rosso / Red



**COD. Q5100215**

D24 Arancio / Orange



**COD. Q5100215**

C03 Giallo / Yellow



**COD. Q5100215**

C09 Pistacchio / Pistachio



**COD. Q5100215**

Z49 Verde scuro / Dark green



**COD. Q5100215**

Z48 Blu / Blue



**COD. Q5100215**

U38 Bluette / Royal



**COD. Q5100215**

D28 Turchese / Turquoise

# JERRY

## Dettagli / Details

- Regolabile con elastico  
- Adjustable with elastic band

## Taglie / Sizes

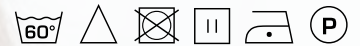
Taglia unica / One size

**COD. Q5100215**

U32 Nero / Black  
Z44 Marrone / Brown  
U33 Caffè / Coffee  
U35 Bordeaux / Bordeaux  
Z46 Fucsia / Fuchsia  
D25 Rosso / Red  
D24 Arancio / Orange  
C03 Giallo / Yellow  
C09 Pistacchio / Pistachio  
Z49 Verde scuro / Dark green  
Z48 Blu / Blue  
U38 Bluette / Royal  
D28 Turchese / Turquoise

## Tessuto / Fabric

100% poliestere  
100% polyester  
220 g / m<sup>2</sup>



**COD. Q5100215**

D25 Rosso / Red



**COD. Q5100216**

U32 Nero / Black



**COD. Q5100216**

Z44 Marrone / Brown



**COD. Q5100216**

U33 Caffè / Coffee



**COD. Q5100216**

U35 Bordeaux / Bordeaux



**COD. Q5100216**

Z46 Fucsia / Fuchsia



**COD. Q5100216**

D25 Rosso / Red



**COD. Q5100216**

D24 Arancio / Orange



**COD. Q5100216**

C03 Giallo / Yellow



**COD. Q5100216**

C09 Pistacchio / Pistachio



**COD. Q5100216**

Z49 Verde scuro / Dark green



**COD. Q5100216**

Z48 Blu / Blue



**COD. Q5100216**

U38 Bluette / Royal



**COD. Q5100216**

D28 Turchese / Turquoise

# PANAREA

## Dettagli / Details

- Regolabile con elastico
- Adjustable with elastic band

## Taglie / Sizes

Taglia unica / One size

**COD. Q5100216**

- U32 Nero / Black
- Z44 Marrone / Brown
- U33 Caffè / Coffee
- U35 Bordeaux / Bordeaux
- Z46 Fucsia / Fuchsia
- D25 Rosso / Red
- D24 Arancio / Orange
- C03 Giallo / Yellow
- C09 Pistacchio / Pistachio
- Z49 Verde scuro / Dark green
- Z48 Blu / Blue
- U38 Bluette / Royal
- D28 Turchese / Turquoise

## Tessuto / Fabric

- 100% poliestere
- 100% polyester
- 220 g / m<sup>2</sup>



**COD. Q5100216**

Z44 Marrone / Brown

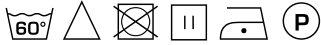






**COD. Q51X0145**

Art. 20P05I2058  
C02 Grigio / Grey  
100% poliestere / polyester  
170 g / m<sup>2</sup>



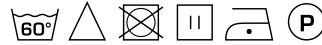
**COD. Q51X0145**

Art. 20P05I2058  
D21 Beige / Beige  
100% poliestere / polyester  
170 g / m<sup>2</sup>



**COD. Q51X0145**

Art. 20P05I2058  
Z44 Marrone / Brown  
100% poliestere / polyester  
170 g / m<sup>2</sup>



**COD. Q51X0146**

Art. 19P05I132  
J32 Jeans nero / Black jeans  
75% cotone 23% poliestere 2% elastan  
75% cotton 23% polyester 2% elastane  
210 g / m<sup>2</sup>



**COD. Q51X0147**

Art. 18P05I060  
J48 Jeans blu / Jeans blue 100%  
cotone  
100% cotton  
260 g / m<sup>2</sup>



**COD. Q51X0234**

Art. 409  
U32 Nero / Black  
100% poliestere / polyester  
220 g / m<sup>2</sup>



**COD. Q51X0235**

Art. 511  
U32 Nero / Black  
100% poliestere / polyester  
220 g / m<sup>2</sup>



**COD. Q51X0182**

Art. 19P05I871  
U32 Nero / Black  
100% poliestere / polyester  
220 g / m<sup>2</sup>



## TOMMY

Taglie / Sizes  
Taglia unica / One size

**COD. Q51X0145**

Art. 20P05I2058  
C02 Grigio / Grey  
D21 Beige / Beige  
Z44 Marrone / Brown

## COPPOLA

Dettagli / Details  
- Regolabile con elastico  
- Adjustable with elastic

Taglie / Sizes  
Taglia unica / One size

**COD. Q51X0146**

Art. 19P05I132  
J32 Jeans nero / Black jeans

**COD. Q51X0147**

Art. 18P05I060  
J48 Jeans blu / Jeans blue

## PAPILLON

Taglie / Sizes  
Taglia unica / One size

**COD. Q51X0234**

Art. 409  
U32 Nero / Black

## CRAVATTA UNISEX

Taglie / Sizes  
Taglia unica / One size

**COD. Q51X0235**

Art. 511  
U32 Nero / Black

## CRAVATTA DONNA

Taglie / Sizes  
Taglia unica / One size

**COD. Q51X0182**

Art. 19P05I871  
U32 Nero / Black



Giacca  
**ELIO**  
pag. 93



**Giblor's**  
italian worklife specialist

Giacca  
**DANA**  
pag. 92

## DANA

### Dettagli / Details

- Sfiancata
- Sfoderata
- 2 bottoni

- *Tight waisted*
- *Unlined*
- *2 buttons*

### Taglie / Sizes

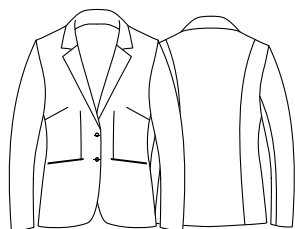
XS ÷ XXXL Slim Fit

**COD. Q1CX0148**

Art. 17P01C901  
U32 Nero / Black

### Tessuto / Fabric

95% poliestere 5% elasthan  
95% polyester 5% elastane  
220 g / m<sup>2</sup>



## LAYLA

### Dettagli / Details

- Fondo stretto
- 2 tasche

- *Slim leg*
- *2 pockets*

### Taglie / Sizes

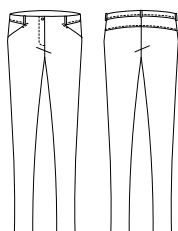
XS ÷ XXXL Slim Fit

**COD. Q1CX0150**

Art. 17P01P903  
U32 Nero / Black

### Tessuto / Fabric

95% poliestere 5% elasthan  
95% polyester 5% elastane  
220 g / m<sup>2</sup>





## ELIO



### Dettagli / Details

- Sfoderata
- 2 bottoni

- Unlined
- 2 buttons

### Taglie / Sizes

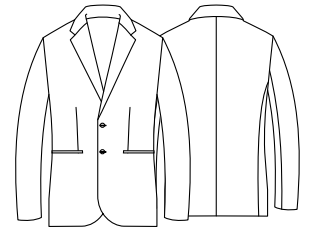
44 ÷ 58 Slim Fit

**COD. Q1CX0152**

Art. 17P01C966  
U32 Nero / Black

### Tessuto / Fabric

95% poliestere 5% elasthan  
95% polyester 5% elastane  
220 g / m<sup>2</sup>



## GIOVANNI



### Dettagli / Details

- Sfoderato - Fondo stretto
- 2 tasche alla francese
- 2 taschine posteriori

- Unlined - Slim leg
- 2 side pockets
- 2 rear pockets

### Taglie / Sizes

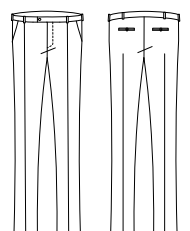
42 ÷ 58 Slim Fit

**COD. Q1PX0154**

Art. 17P01P546  
U32 Nero / Black

### Tessuto / Fabric

95% poliestere 5% elasthan  
95% polyester 5% elastane  
220 g / m<sup>2</sup>



## DANA

### Dettagli / Details

- Sfiancata
- Sfoderata
- 2 bottoni

- *Tight waisted*
- *Unlined*
- *2 buttons*

### Taglie / Sizes

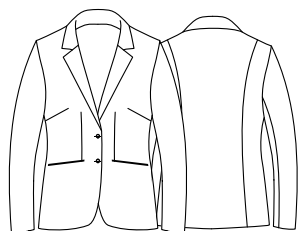
XS ÷ XXXL Slim Fit

**COD. Q1CX0149**

Art. 20P01C901  
Z48 Blu / Blue

### Tessuto / Fabric

95% poliestere 5% elasthan  
95% polyester 5% elastane  
220 g / m<sup>2</sup>



## LAYLA

### Dettagli / Details

- Fondo stretto
- 2 tasche

- *Slim leg*
- *2 pockets*

### Taglie / Sizes

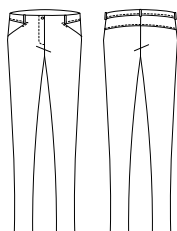
XS ÷ XXXL Slim Fit

**COD. Q1CX0151**

Art. 20P01P903  
Z48 Blu / Blue

### Tessuto / Fabric

95% poliestere 5% elasthan  
95% polyester 5% elastane  
220 g / m<sup>2</sup>





## ELIO



### Dettagli / Details

- Sfoderata
- 2 bottoni

- Unlined
- 2 buttons

### Taglie / Sizes

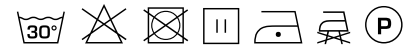
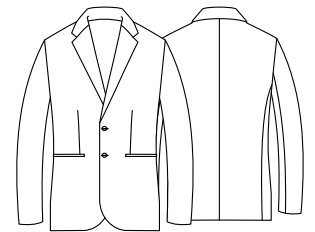
44 ÷ 58 Slim Fit

**COD. Q1CX0153**

Art. 20P01C966  
Z48 Blu / Blue

### Tessuto / Fabric

95% poliestere 5% elastan  
95% polyester 5% elastane  
220 g / m<sup>2</sup>



## GIOVANNI



### Dettagli / Details

- Sfoderato - Fondo stretto
- 2 tasche alla francese
- 2 taschine posteriori

- Unlined - Slim leg
- 2 side pockets
- 2 rear pockets

### Taglie / Sizes

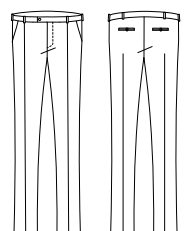
42 ÷ 58 Slim Fit

**COD. Q1PX0155**

Art. 20P01P546  
Z48 Blu / Blue

### Tessuto / Fabric

95% poliestere 5% elastan  
95% polyester 5% elastane  
220 g / m<sup>2</sup>



# MIGUEL

## Dettagli / Details

- Foderato
- 2 tasche
- 4 bottoni
- Fascette regolabili

- Lined
- 2 pockets
- 4 buttons
- Adjustable buckle

## Taglie / Sizes

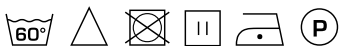
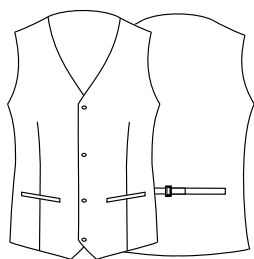
XS ÷ XXXL Regular Fit

**COD. Q1EX0158**

Art. 106/E  
U32 Nero / Black

## Tessuto / Fabric

100% poliestere  
100% polyester  
160 g / m<sup>2</sup>



**COD. Q1EX0160**

Art. 106BX  
U35 Bordeaux / Burgundy

100% poliestere / polyester  
220 g / m<sup>2</sup>



**COD. Q1EX0159**

Art. 106  
Z48 Blu / Blue

100% poliestere / polyester  
160 g / m<sup>2</sup>





## ROSITA

### Dettagli / Details

- Sfoderato
- 2 tasche
- 4 bottoni
- Fascette regolabili

- Unlined
- 2 pockets
- 4 buttons
- Adjustable buckle

### Taglie / Sizes

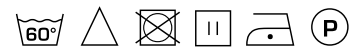
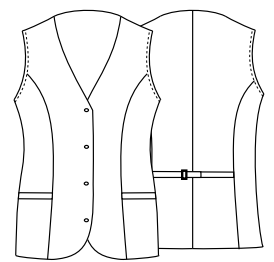
XS ÷ XXL Regular Fit

**COD. Q1EX0161**

Art. 270/E  
U32 Nero / Black

### Tessuto / Fabric

100% poliestere  
100% polyester  
160 g / m<sup>2</sup>



**COD. Q1EX0163**

Art. 270BX  
U35 Bordeaux / Burgundy

100% poliestere / polyester  
220 g / m<sup>2</sup>



**COD. Q1EX0162**

Art. 270  
Z48 Blu / Blue

100% poliestere / polyester  
160 g / m<sup>2</sup>



## MATTEO

### Dettagli / Details

- Sfoderato
- 2 tasche alla francese
- 2 taschine posteriori
- Fondo stretto

- Unlined
- 2 side pockets
- 2 rear pockets
- Slim leg

### Taglie / Sizes

40 ÷ 64 Slim Fit

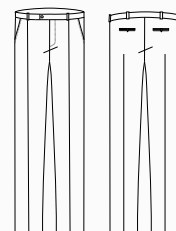
**COD. Q1PX0156**

Art. 90  
U32 Nero / Black

**COD. Q1PX0157**

Art. 90/B  
Z48 Blu / Blue

**Tessuto / Fabric**  
100% poliestere  
100% polyester  
160 g / m<sup>2</sup>



**Giblor's**  
italian work/life specialist



Gilet  
**ROSITA**  
pag. 97

Camicia  
**AURORA**  
pag. 103

# NOVAK

## Dettagli / Details

- Collo coreano
- Polsino regolabile

- Mandarin collar
- Adjustable cuff

## Taglie / Sizes

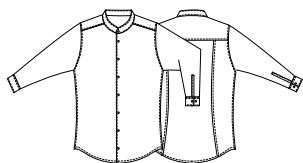
S ÷ 4XL Slim Fit

**COD. Q1NX0164**

Art. 19P01N085  
C01 Bianco / White  
U32 Nero / Black

## Tessuto / Fabric

65% poliestere 35% cotone  
65% polyester 35% cotton  
110 g / m<sup>2</sup>



**COD. Q1NX0164**

Art. 19P01N085  
U32 Nero / Black



# VENUS

**Dettagli / Details**  
- Collo coreano  
- Mandarin collar

**Taglie / Sizes**  
XS ÷ 4XL Regular Fit

**COD. Q1NX0165**

Art. 19P01N086  
C01 Bianco / White  
U32 Nero / Black

**Tessuto / Fabric**  
65% poliestere 35% cotone  
65% polyester 35% cotton  
110 g / m<sup>2</sup>



**COD. Q1NX0165**

Art. 19P01N086  
C01 Bianco / White



# PRINCE

## Dettagli / Details

- Collo classico
- Polsino regolabile

- Classic collar
- Adjustable cuff

## Taglie / Sizes

XS ÷ 5XL Slim Fit

**COD. Q1NX0166**

Art. 11P01056  
C01 Bianco / White  
U32 Nero / Black

## Tessuto / Fabric

65% poliestere 35% cotone  
65% polyester 35% cotton  
110 g / m<sup>2</sup>



**COD. Q1NX0166**

Art. 11P01056  
U32 Nero / Black





## AURORA

### Dettagli / Details

- Collo classico

- Classic collar

### Taglie / Sizes

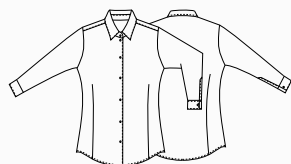
XS ÷ XXXL Regular Fit

**COD. Q1NX0167**

Art. 1600  
C01 Bianco / White

### Tessuto / Fabric

65% poliestere 35% cotone  
65% polyester 35% cotton  
110 g / m<sup>2</sup>



## FARA

### Dettagli / Details

- Collo classico

- Classic collar

### Taglie / Sizes

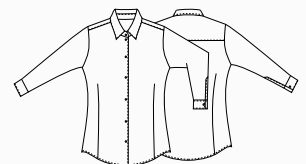
XS ÷ XXXL Regular Fit

**COD. Q1NX0168**

Art. 11P01057  
U32 Nero / Black

### Tessuto / Fabric

65% poliestere 35% cotone  
65% polyester 35% cotton  
110 g / m<sup>2</sup>





## ORTENSIA

### Dettagli / Details

- 2 tasche
- 2 pockets

### Taglie / Sizes

XS ÷ 4XL Slim Fit

**COD. Q9R00220**

C02 Grigio chiaro / Light grey  
U35 Bordeaux / Bordeaux

### Tessuto / Fabric

65% poliestere 35% cotone  
65% polyester 35% cotton  
113 g / m<sup>2</sup>







**COD. Q9R00220**

C02 Grigio chiaro / Light grey



## VIOLA

### Dettagli / Details

- 3 tasche
- Maniche ad aletta

- 3 pockets
- Flap sleeves

### Taglie / Sizes

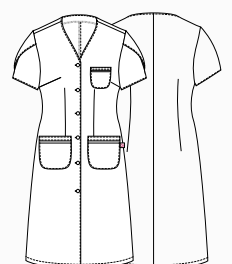
XS ÷ 4XL Slim Fit

**COD. Q9R00221**

Q32 Quadro nero / *Black check*  
Q35 Quadro bordeaux / *Bordeaux check*

### Tessuto / Fabric

60% cotone 40% poliestere  
60% cotton 40% polyester  
145 g / m<sup>2</sup>





## MAGNOLIA

### Dettagli / Details

- Senza tasche
- No pockets

### Taglie / Sizes

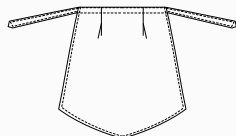
Taglia unica / One size

**COD. Q9H00224**

C01 Bianco / White

### Tessuto / Fabric

100% cotone  
100% cotton  
185 g / m<sup>2</sup>



## MIMOSA

### Dettagli / Details

- Senza tasche
- No pockets

### Taglie / Sizes

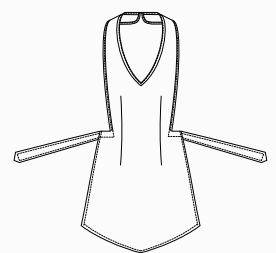
Taglia unica / One size

**COD. Q9H00225**

C01 Bianco / White

### Tessuto / Fabric

100% cotone  
100% cotton  
185 g / m<sup>2</sup>



# CAMELIA

## Dettagli / Details

- 2 tasche
- 2 spacchetti laterali

- 2 pockets
- 2 side vents

## Taglie / Sizes

XS ÷ 4XL Regular Fit

**COD. Q9K00222**

C01 Bianco / White

## Tessuto / Fabric

65% poliestere 35% cotone  
65% polyester 35% cotton  
145 g / m<sup>2</sup>



**COD. Q9K00223**

C02 Grigio chiaro / Light grey  
U35 Bordeaux / Bordeaux

## Tessuto / Fabric

65% poliestere 35% cotone  
65% polyester 35% cotton  
113 g / m<sup>2</sup>



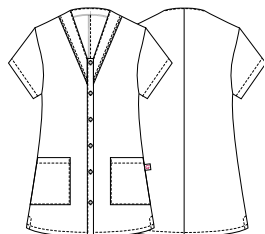
**COD. Q9K00222**

C01 Bianco / White



**COD. Q9K00223**

C02 Grigio chiaro / Light grey





**COD. Q9K00223**

U35 Bordeaux / Bordeaux

# ALTEA

## Dettagli / Details

- 2 tasche
- Chiusura con zip rovesciata

- 2 pockets
- Inverted zip fastening

## Taglie / Sizes

XS ÷ 4XL Slim Fit

**COD. Q9K00226**

C01 Bianco / White

## Tessuto / Fabric

100% cotone  
100% cotton  
185 g / m<sup>2</sup>



**COD. Q9K00227**

C04 Salmone / Salmon  
C08 Azzurro chiaro / Light blue  
M19 Verde acqua / Acqua green

## Tessuto / Fabric

70% poliestere 30% cotone  
70% polyester 30% cotton  
132 g / m<sup>2</sup>



**COD. Q9K00226**

C01 Bianco / White

**COD. Q9K00227**

C08 Azzurro chiaro / Light blue



**COD. Q9K00227**

M19 Verde acqua / Acqua green





**COD. Q9K00227**

C04 Salmone / Salmon

# PRIMULA

## Dettagli / Details

- 2 tasche
- Maniche arrotolabili

- 2 pockets
- Roll-up sleeves

## Taglie / Sizes

XS ÷ 3XL Regular Fit

**COD. Q9K00249**

C01 Bianco / White

**COD. Q9K00251**

D25 Rosso / Red

## Tessuto / Fabric

65% poliestere 35% cotone  
65% polyester 35% cotton  
143 g / m<sup>2</sup>

**COD. Q9K00250**

Q32 Quadro nero / Black check

## Tessuto / Fabric

60% cotone 40% poliestere  
60% cotton 40% polyester  
100 g / m<sup>2</sup>



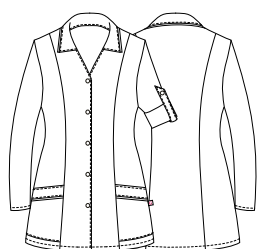
**COD. Q9K00249**

C01 Bianco / White



**COD. Q9K00251**

D25 Rosso / Red







**COD. Q9K00250**

Q32 Quadro nero / Black check

# RICKY

## Dettagli / Details

- 3 tasche
- Maniche arrotolabili

- 3 pockets
- Roll-up sleeves

## Taglie / Sizes

S ÷ 4XL Comfort Fit

**COD. Q9K00252**

C01 Bianco / White

**COD. Q9K00254**

D25 Rosso / Red

## Tessuto / Fabric

65% poliestere 35% cotone  
65% polyester 35% cotton  
143 g / m<sup>2</sup>

**COD. Q9K00253**

Q32 Quadro nero / Black check

## Tessuto / Fabric

60% cotone 40% poliestere  
60% cotton 40% polyester  
100 g / m<sup>2</sup>



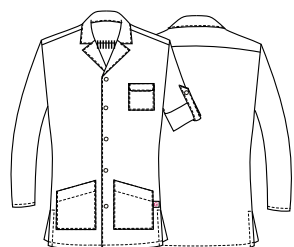
**COD. Q9K00252**

C01 Bianco / White



**COD. Q9K00253**

Q32 Quadro nero / Black check





**COD. Q9K00254**

D25 Rosso / Red



**COD. Q9H00228**

Q32 Quadro nero / *Black check*



**COD. Q9H00229**

C02 Grigio chiaro / *Light grey*



**COD. Q9H00229**

U35 Bordeaux / *Bordeaux*



**COD. Q9H00232**

C01 Bianco / *White*



**COD. Q9H00233**

D25 Rosso / *Red*



**COD. Q9H00270**

C04 Salmone / *Salmon*



**COD. Q9H00270**

C08 Azzurro chiaro / *Light blue*



**COD. Q9H00270**

M19 Verde acqua / *Acqua green*

# ZEFIRO

## Dettagli / Details

- 3 tasche  
- Chiusura con laccetti sui fianchi

- 3 pockets  
- Closure with string on the sides

## Taglie / Sizes

Taglia unica / One size

**COD. Q9H00228**

Q32 Quadro nero / Black check

## Tessuto / Fabric

60% cotone 40% poliestere  
60% cotton 40% polyester  
100 g / m<sup>2</sup>

**COD. Q9H00229**

C02 Grigio chiaro / Light grey  
U35 Bordeaux / Bordeaux

## Tessuto / Fabric

65% poliestere 35% cotone  
65% polyester 35% cotton  
113 g / m<sup>2</sup>

**COD. Q9H00232**

C01 Bianco / White

**COD. Q9H00233**

D25 Rosso / Red  
U32 Nero / Black

## Tessuto / Fabric

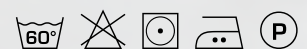
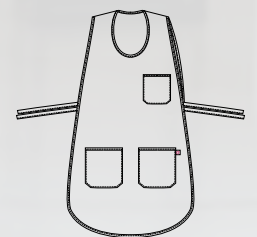
65% poliestere 35% cotone  
65% polyester 35% cotton  
143 g / m<sup>2</sup>

**COD. Q9H00270**

C04 Salmone / Salmon  
C08 Azzurro chiaro / Light blue  
M19 Verde acqua / Acqua green

## Tessuto / Fabric

70% poliestere 30% cotone  
70% polyester 30% cotton  
132 g / m<sup>2</sup>



**COD. Q9H00233**

U32 Nero / Black



La linea **Giblor's Essential** amplia l'offerta **Giblor's** e propone una gamma di prodotti ancor più competitiva per il settore **medicale e wellness**.

Grazie al know-how maturato dall'azienda in materia di tessuti e trattamenti, che ne assicurano le performance, i capi che fanno parte della linea **Essential Health&Wellness** garantiscono facilità di manutenzione e durata nel tempo, oltre che grande libertà di movimento e un fit perfetto, elementi imprescindibili per una divisa da lavoro di qualità.

La linea propone un ricco e variegato assortimento di casacche destinate al settore wellness, e molte sono le proposte per il settore medico, dove il colore è grande protagonista, grazie soprattutto ad alcune nuove nuance molto contemporanee.

# ESSENTIAL

## COLLECTION

*The **Giblor's Essential** line expands **Giblor's** offer and offers an even more competitive range of products for the **medical and wellness** sector.*

*Thanks to the know-how gained by the company in the field of fabrics and treatments, which ensure their performance, the garments that are part of the **Essential Health&Wellness** line guarantee ease of maintenance and durability, as well as great freedom of movement and a perfect fit. , essential elements for a quality work uniform.*

*The line offers a rich and varied assortment of jackets intended for the wellness sector, and there are many proposals for the medical sector, where color is a great protagonist, thanks above all to some new very contemporary nuances.*



## MIKE

### Dettagli / Details

- 3 tasche
- Abbottonatura con automatici
- Polsino con elastico

- 3 pockets
- Buttoning with press studs
- Cuff with elastic band

### Taglie / Sizes

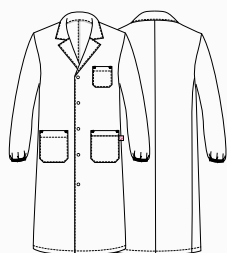
XS ÷ 4XL Regular Fit

**COD. Q3R00247**

C01 Bianco / White

### Tessuto / Fabric

100% cotone  
100% cotton  
185 g / m<sup>2</sup>



## MILLY

### Dettagli / Details

- 3 tasche
- Abbottonatura con automatici
- Polsino con elastico

- 3 pockets
- Buttoning with press studs
- Cuff with elastic band

### Taglie / Sizes

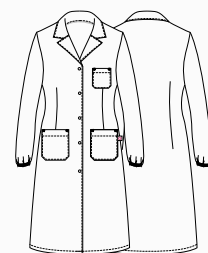
XS ÷ 3XL Regular Fit

**COD. Q3R00248**

C01 Bianco / White

### Tessuto / Fabric

100% cotone  
100% cotton  
185 g / m<sup>2</sup>







## TRISTANO

### Dettagli / Details

- 3 tasche
- Polsino con elastico

- 3 pockets
- Cuff with elastic band

### Taglie / Sizes

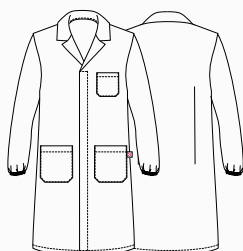
S ÷ 4XL Slim Fit

**COD. Q3R00261**

C01 Bianco / White

### Tessuto / Fabric

100% cotone  
100% cotton  
185 g / m<sup>2</sup>



## ISOTTA

### Dettagli / Details

- 3 tasche
- Polsino con elastico

- 3 pockets
- Cuff with elastic band

### Taglie / Sizes

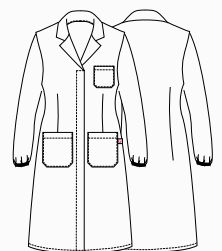
XS ÷ 3XL Regular Fit

**COD. Q3R00262**

C01 Bianco / White

### Tessuto / Fabric

100% cotone  
100% cotton  
185 g / m<sup>2</sup>





Casacca  
**Gabriele**  
pag. 124



Casacca  
**Alice**  
pag. 126

# GABRIELE

## Dettagli / Details

- Chiusura con zip rovesciata
- Taschino sul petto
- 2 tasche
- Polsini con elastico
- Doppio cursore

- *Inverted zip fastening*
- *Breast pocket*
- *2 pockets*
- *Cuffs with elastic band*
- *Double cursor*

## Taglie / Sizes

S ÷ 4XL Slim Fit

**COD. Q3KX0174**

Art. 20P03K191  
C01 Bianco / White

**COD. Q3KX0176**

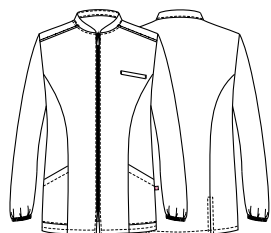
Art. 21P03K194  
Z48 Blu / Blue

**COD. Q3KX0175**

Art. 20P03K194  
D29 Verde / Green  
M18 Azzurro / Light blue

## Tessuto / Fabric

100% cotone  
100% cotton  
185 g / m<sup>2</sup>



**COD. Q3KX0174**

Art. 20P03K191  
C01 Bianco / White



**COD. Q3KX0176**

Art. 21P03K194  
Z48 Blu / Blue  
100% cotone / cotton - 185 g / m<sup>2</sup>



**COD. Q3KX0175**

Art. 20P03K194  
D29 Verde / Green  
100% cotone / cotton - 185 g / m<sup>2</sup>



**COD. Q3KX0175**

Art. 20P03K194  
M18 Azzurro / Light blue  
100% cotone / cotton - 185 g / m<sup>2</sup>



# ALICE

## Dettagli / Details

- Chiusura con zip rovesciata
- Taschino sul petto
- 2 tasche
- Polsini con elastico
- Doppio cursore

- *Inverted zip fastening*
- *Breast pocket*
- *2 pockets*
- *Cuffs with elastic band*
- *Double cursor*

## Taglie / Sizes

XS ÷ XXXL Slim Fit

**COD. Q3KX0177**

Art. 20P03K192  
C01 Bianco / White

**COD. Q3KX0179**

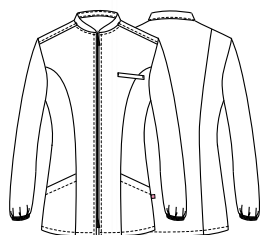
Art. 21P03K195  
Z48 Blu / Blue

**COD. Q3KX0178**

Art. 20P03K195  
D29 Verde / Green  
M18 Azzurro / Light blue

## Tessuto / Fabric

100% cotone  
100% cotton  
185 g / m<sup>2</sup>



**COD. Q3KX0177**

Art. 20P03K192  
C01 Bianco / White



**COD. Q3KX0179**

Art. 21P03K195  
Z48 Blu / Blue  
100% cotone / cotton - 185 g / m<sup>2</sup>



**COD. Q3KX0178**

Art. 20P03K195  
D29 Verde / Green  
100% cotone / cotton - 185 g / m<sup>2</sup>



**COD. Q3KX0178**

Art. 20P03K195  
M18 Azzurro / Light blue  
100% cotone / cotton - 185 g / m<sup>2</sup>



# ALAN

## Dettagli / Details

- 2 tasche
- 1 tasca sul retro
- Elastico e coulisse

- 2 pockets
- 1 rear pocket
- Elasticated waistband with drawstring

**COD. Q3PX0181**

Art. 21P03P1340  
Z48 Blu / Blue

## Taglie / Sizes

XS ÷ 4XL Slim Fit

**COD. Q3PX0180**

Art. 1340  
D29 Verde / Green  
M18 Azzurro / Light blue

## Taglie / Sizes

XS ÷ XXXL Slim Fit

## Tessuto / Fabric

100% cotone  
100% cotton  
185 g / m<sup>2</sup>



**COD. Q3PX0181**

ART. 21P03P1340  
Z48 Blu / Blue



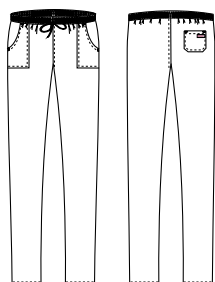
**COD. Q3PX0180**

Art. 1340  
D29 Verde / Green



**COD. Q3PX0180**

Art. 1340  
M18 Azzurro / Light blue





# PIERO

**Dettagli / Details**

- 2 tasche
- Taschino sul petto
- 2 spacchetti laterali
- 2 pockets
- Breast pocket
- 2 side vents

**Taglie / Sizes**

XS ÷ 4XL Slim Fit



**COD. Q3KX0170**

Art. 21P03K1335  
Z48 Blu / Blue

**COD. Q3KX0169**

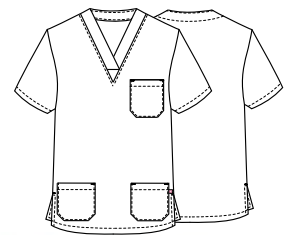
Art. 1335  
D29 Verde / Green  
M18 Azzurro / Light blue

**Tessuto / Fabric**

100% cotone / cotton  
185 g / m<sup>2</sup>

**COD. Q3KX0170**

Art. 21P03K1335  
Z48 Blu / Blue



**COD. Q3KX0169**

Art. 1335  
M18 Azzurro / Light blue



**COD. Q3KX0169**

Art. 1335  
D29 Verde / Green



# MILENA

## Dettagli / Details

- 2 tasche
- Taschino sul petto
- 2 spacchetti laterali

- 2 pockets
- Breast pocket
- 2 side vents

## Taglie / Sizes

XS ÷ XXXL Slim Fit

**COD. Q3KX0171**

Art. 20P03K193  
C01 Bianco / White

**COD. Q3KX0173**

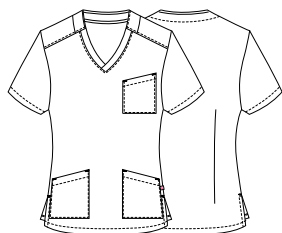
Art. 21P03K196  
Z48 Blu / Blue

**COD. Q3KX0172**

Art. 20P03K196  
D29 Verde / Green  
M18 Azzurro / Light blue

## Tessuto / Fabric

100% cotone  
100% cotton  
185 g / m<sup>2</sup>



**COD. Q3KX0171**

Art. 20P03K193  
C02 Bianco / White



**COD. Q3KX0172**

Art. 20P03K196  
D29 Verde / Green  
100% cotone / cotton - 185 g / m<sup>2</sup>



**COD. Q3KX0173**

Art. 21P03K196  
Z48 Blu / Blue  
100% cotone / cotton - 185 g / m<sup>2</sup>



**COD. Q3KX0172**

Art. 20P03K196  
M18 Azzurro / Light blue  
100% cotone / cotton - 185 g / m<sup>2</sup>



**PANTALONI COORDINABILI  
MATCHING PANTS**

pag. 128

## health & wellness

Casacche unisex

Unisex tunics

# GARY

### Dettagli / Details

- 2 tasche
- Taschino sul petto
- 2 spacchetti laterali

- 2 pockets
- Breast pocket
- 2 side vents

### Taglie / Sizes

XS ÷ 4XL Slim Fit

**COD. Q3K00244**

P18 Profilo azzurro / Light blue piping

P24 Profilo arancio / Orange piping

P29 Profilo verde / Green piping

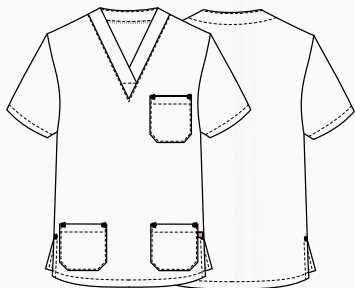
P48 Profilo blu / Blue piping

### Tessuto / Fabric

100% cotone

100% cotton

185 g / m<sup>2</sup>



**PANTALONI COORDINABILI**  
**MATCHING PANTS**

pag. 136/137

**COD. Q3K00244**

P24 Profilo arancio / Orange piping



**COD. Q3K00244**

P48 Profilo blu / Blue piping



**COD. Q3K00244**

P29 Profilo verde / Green piping



**COD. Q3K00244**

P18 Profilo azzurro / Light blue piping

## health & wellness

Casacche unisex

Unisex tunics

# JASON

### Dettagli / Details

- 2 tasche
- Taschino sul petto
- 2 spacchetti laterali

- 2 pockets
- Breast pocket
- 2 side vents

### Taglie / Sizes

XS ÷ 4XL Slim Fit

**COD. Q3K00242**

C01 Bianco / White

### Tessuto / Fabric

100% cotone  
100% cotton  
185 g / m<sup>2</sup>

**COD. Q3K00243**

C07 Lilla chiaro / Light lilac

C09 Pistacchio / Pistachio

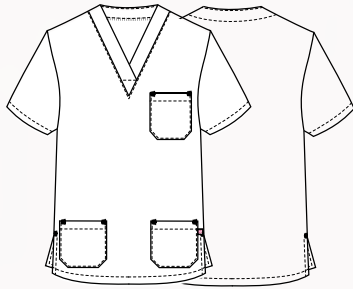
D24 Arancio / Orange

U38 Bluette / Royal

Z46 Fucsia / Fuchsia

### Tessuto / Fabric

100% cotone  
100% cotton  
200 g / m<sup>2</sup>



**COD. Q3K00243**

Z46 Fucsia / Fuchsia





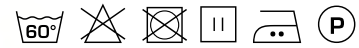
**COD. Q3K00242**

C01 Bianco / White



**COD. Q3K00243**

U38 Bluette / Royal



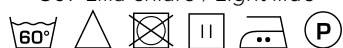
**COD. Q3K00243**

C09 Pistacchio / Pistachio



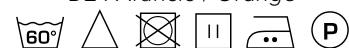
**COD. Q3K00243**

C07 Lilla chiaro / Light lilac



**COD. Q3K00243**

D24 Arancio / Orange



# PITAGORA

## Dettagli / Details

- 2 tasche
- 1 tasca sul retro
- Elastico e coulisse

- 2 pockets
- 1 rear pocket
- Elasticated waistband with drawstring

## Taglie / Sizes

XS ÷ 4XL Slim Fit

**COD. Q3P00245**

C01 Bianco / White

## Tessuto / Fabric

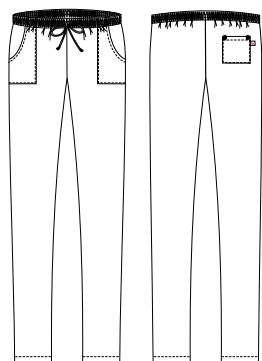
100% cotone  
100% cotton  
185 g / m<sup>2</sup>

**COD. Q3P00246**

C07 Lilla chiaro / Light lilac  
C09 Pistacchio / Pistachio  
D24 Arancio / Orange  
U38 Bluette / Royal  
Z46 Fucsia / Fuchsia

## Tessuto / Fabric

100% cotone  
100% cotton  
200 g / m<sup>2</sup>



**COD. Q3P00245**

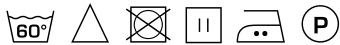
C01 Bianco / White





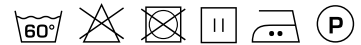
**COD. Q3P00246**

C07 Lilla chiaro / Light lilac



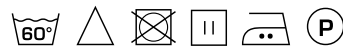
**COD. Q3P00246**

C09 Pistacchio / Pistachio



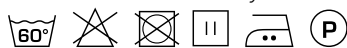
**COD. Q3P00246**

D24 Arancio / Orange



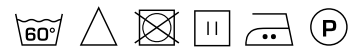
**COD. Q3P00246**

U38 Bluette / Royal



**COD. Q3P00246**

Z46 Fucsia / Fuchsia







## health & wellness

Casacche donna

Women's tunics

# CARMEN

### Dettagli / Details

- Taschino sul petto
- 2 tasche
- Chiusura con zip rovesciata

- Breast pocket
- 2 pockets
- Inverted zip fastening

### Taglie / Sizes

XS ÷ 3XL Slim Fit

**COD. Q2K00238**

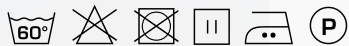
C01 Bianco / White

**COD. Q2K00239**

U32 Nero / Black

### Tessuto / Fabric

100% poliestere  
100% polyester  
86 g / m<sup>2</sup>



ULTRA  
LIGHT



**COD. Q2K00239**

U32 Nero / Black

**COD. Q2K00238**

C01 Bianco / White

BIONIC  
FINISH<sup>®</sup> C<sub>6</sub>

ULTRA  
LIGHT

## MAURIZIO

### Dettagli / Details

- Taschino sul petto  
- 1 tasca
- Chiusura con zip rovesciata

- Breast pocket  
- 1 pocket
- Inverted zip fastening

### Taglie / Sizes

S ÷ 4XL Slim Fit

**COD. Q2K00259**

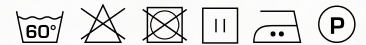
C01 Bianco / White

**COD. Q2K00260**

U32 Nero / Black

### Tessuto / Fabric

100% poliestere  
100% polyester  
86 g / m<sup>2</sup>



**COD. Q2K00259**

C01 Bianco / White

**COD. Q2K00260**

U32 Nero / Black



## health & wellness

Casacche donna

Women's tunics

# ELEA

### Dettagli / Details

- 2 tasche
- Bottoni a pressione
- Inserti in rete

- 2 pockets
- Press studs
- Network fabric panels

### Taglie / Sizes

XS ÷ 3XL Slim Fit

**COD. Q2K00230**

C01 Bianco / White

**COD. Q2K00231**

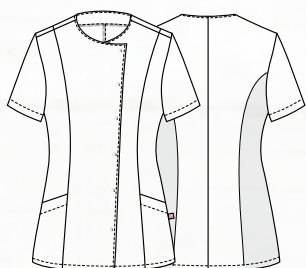
U32 Nero / Black

### Tessuto / Fabric

65% poliestere 35% cotone

65% polyester 35% cotton

143 g / m<sup>2</sup>



**COD. Q2K00231**

U32 Nero / Black

**COD. Q2K00230**

C01 Bianco / White

## PINES

### Dettagli / Details

- 2 tasche
- Chiusura con zip rovesciata

- 2 pockets
- Inverted zip fastening

### Taglie / Sizes

XS ÷ 3XL Slim Fit

**COD. Q2K00255**

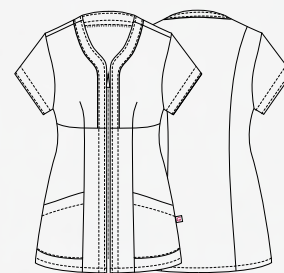
C01 Bianco / White

**COD. Q2K00256**

U32 Nero / Black

### Tessuto / Fabric

65% poliestere 35% cotone  
65% polyester 35% cotton  
143 g / m<sup>2</sup>



**COD. Q2K00255**

C01 Bianco / White

**COD. Q2K00256**

U32 Nero / Black



## health & wellness

Casacche donna

Women's tunics

# SARA

### Dettagli / Details

- 2 tasche
- Bottoni a pressione nascosti

- 2 pockets
- Hidden press studs

### Taglie / Sizes

XS ÷ 3XL Slim Fit

**COD. Q2K00236**

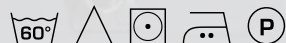
C01 Bianco / White

**COD. Q2K00237**

U32 Nero / Black

### Tessuto / Fabric

65% poliestere 35% cotone  
65% polyester 35% cotton  
143 g / m<sup>2</sup>



**COD. Q2K00271**

C04 Salmone / Salmon  
C08 Azzurro chiaro / Light blue  
M19 Verde acqua / Acqua green

### Tessuto / Fabric

70% poliestere 30% cotone  
70% polyester 30% cotton  
132 g / m<sup>2</sup>



**COD. Q2K00237**

U32 Nero / Black





**COD. Q2K00236**

C01 Bianco / White



**COD. Q2K00271**

C04 Salmone / Salmon



**COD. Q2K00271**

M19 Verde acqua / Acqua green



**COD. Q2K00271**

C08 Azzurro chiaro / Light blue

# ILARIA

## Dettagli / Details

- Ampia tasca centrale
- Spacchetti sulle maniche

- Wide central pocket
- Vents on sleeves

## Taglie / Sizes

XS ÷ 3XL Regular Fit

**COD. Q2K00257**

C01 Bianco / White

**COD. Q2K00258**

U32 Nero / Black

## Tessuto / Fabric

65% poliestere 35% cotone  
65% polyester 35% cotton  
143 g / m<sup>2</sup>



**COD. Q2K00257**

C01 Bianco / White

**COD. Q2K00258**

U32 Nero / Black



## CAMERON

### Dettagli / Details

- 2 tasche
- 1 tasca sul retro
- Elastico e coulisse

- 2 pockets
- 1 rear pocket
- Elasticated waistband with drawstring

### Taglie / Sizes

XS ÷ 3XL Slim Fit

**COD. Q2P00240**

C01 Bianco / White

### Tessuto / Fabric

100% cotone  
100% cotton  
185 g / m<sup>2</sup>

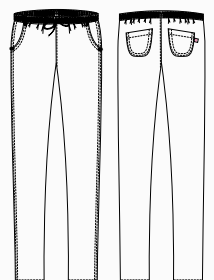


**COD. Q2P00241**

U32 Nero / Black

### Tessuto / Fabric

65% poliestere 35% cotone  
65% polyester 35% cotton  
200 g / m<sup>2</sup>





## DALLA FORESTA ALLA PRODUZIONE

Conosciute per il loro comfort naturale e per il processo di produzione rispettoso per l'ambiente, le fibre **TENCEL™** Lyocell offrono qualità, performance e versatilità. Proprietà fisiche uniche gli conferiscono alta resistenza, eccellente gestione dell'umidità e delicatezza sulla pelle.



## PRODUZIONE SOSTENIBILE

Le fibre **TENCEL™** Lyocell si sono guadagnate la loro reputazione grazie al processo di produzione a ciclo chiuso rispettoso per l'ambiente, che trasforma la polpa del legno in fibra di cellulosa con alta efficienza delle risorse e un basso impatto ambientale.

La speciale fibra, di origine botanica viene estratta da legno proveniente da piantagioni forestali sostenibili, utilizzando un solvente riciclato quasi al 100%.

Grazie ai microscopici canali tra le singole fibre, **TENCEL™** assorbe fino al 50% di umidità in più rispetto al cotone, riducendo drasticamente la formazione di batteri. Lasciando la pelle piacevolmente asciutta e mantenendo il suo naturale equilibrio, questa fibra evita lo sviluppo di irritazioni.

I tessuti contenenti la fibra **TENCEL™**, sono caratterizzati da un'altissima stabilità dimensionale, si dimostrano **eccezionalmente forti e resistenti all'usura**, e sono adatti ai lavaggi industriali. Grazie all'insieme di queste eccellenti caratteristiche, **TENCEL™** può essere considerata la fibra del futuro.

## FROM THE FOREST TO PRODUCTION

Known for their natural comfort and environmentally friendly production process, the **TENCEL™** Lyocell fibers offer quality, performance and versatility. Unique physical properties give it high strength, excellent moisture management and delicacy on the skin.

## SUSTAINABLE PRODUCTION

**TENCEL™** Lyocell fibers have gained a commendable reputation for their environmentally responsible closed loop production process, which transforms wood pulp into cellulosic fibers with high resource efficiency and low ecological impact.

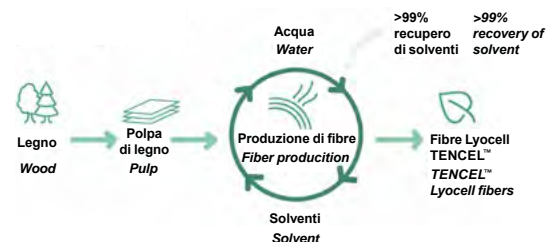
This special fiber, of botanic origin, is extracted from sustainable forests, using an almost 100% recycled solvent

Thanks to the microscopic channels between the individual fibers, **TENCEL™** absorbs up to **50% more of moisture than cotton**, reducing dramatically the growth of bacteria. Leaving the skin pleasantly dry and keeping its natural balance, this fiber prevents skin irritation.

**TENCEL™** fibers are characterized by a very high dimensional stability, they prove to be **exceptionally strong and resistant to wear**, and are suitable for industrial washing. Thanks to all these characteristics, **TENCEL™** can be considered the fiber of the future.

## TENCEL™ Lyocell fibers

### Processo di produzione / production process





Le fibre in **TENCEL™** Lyocell supportano le proprietà di regolazione della temperatura corporea attraverso la gestione dell'umidità.

***TENCEL™** Lyocell bers support body temperature regulating properties through their moisture management.*

Attraverso la gestione dell'umidità, le fibre di **TENCEL™** Lyocell assorbono l'umidità in modo efficiente: di conseguenza, le fibre di **TENCEL™** Lyocell forniscono un ambiente meno favorevole alla crescita batterica, offrendo migliori qualità igieniche.

*Through moisture management, **TENCEL™** Lyocell bers absorb moisture efficiently: consequently, **TENCEL™** Lyocell bers provide a less favorable environment for bacterial growth, offering better hygienic qualities.*



Le fibre in **TENCEL™** Lyocell supportano le proprietà di regolazione della temperatura corporea attraverso la gestione dell'umidità. Assorbimento e rilascio di umidità, contribuiscono alla traspirabilità del tessuto che supporta la regolazione termica naturale del corpo.

***TENCEL™** Lyocell bers support body temperature regulating properties through their moisture management. Absorption and release of moisture, contributing to fabric breathability that supports the body's natural thermal regulation.*

Le fibre di **TENCEL™** Lyocell sono naturalmente morbide al tatto, offrono un comfort duraturo e mostrano una superficie liscia, donando ai tessuti una sensazione morbida e garantendo comfort alle pelli sensibili.

***TENCEL™** Lyocell bers are naturally soft to the touch, offer long-lasting comfort and exhibit a smooth surface area, giving fabrics a soft feel and ensuring comfort for sensitive skin.*



Le fibre di **TENCEL™** Lyocell sono resistenti e godono di una lunga durata grazie alla loro maggiore resistenza tra le fibre di cellulosa.

***TENCEL™** Lyocell bers are versatile and distinguished by their high tenacity profile among cellulose bers.*

Tutte le fibre standard di **TENCEL™** Lyocell sono certificate come biodegradabili e compostabili in condizioni industriali, domestiche, del suolo e marine, quindi possono tornare completamente alla natura.

*Derived from nature, all **TENCEL™** standard Lyocell ber types have been certified as biodegradable and compostable under industrial, home, soil and marine conditions, thus they can fully revert back to nature.*



[www.tencel.com](http://www.tencel.com)

# BIONIC-FINISH® C6

È il primo sistema idrorepellente completo a livello mondiale per l'industria tessile.

*It is the first complete water repellent system in the world for the textile industry.*

## BREVETTATO E SVILUPPATO PER CONFERIRE AI TESSUTI CARATTERISTICHE DI IDROREPELLENZA ALL'ACQUA, AGLI OLI E ALLE MACCHIE IN GENERALE.

Il **BIONIC-FINISH®** è ispirato alla pelle dello squalo che, contrariamente a quanto si pensi, non è liscia ma piuttosto ruvida e costituita da piccolissime scanalature longitudinali che lasciano passare l'acqua sul corpo in modo controllato, riducendone al minimo l'attrito. Grazie a questa speciale struttura, l'effetto pelle di squalo è stato implementato nei costumi da bagno per le competizioni ed è tra le scoperte più conosciute della bionica.

Il sistema **BIONIC-FINISH®** garantisce massima traspirabilità e consente al tessuto di mantenere una mano molto morbida, altissimo comfort, un'eccellente durata nel tempo e colori sempre nuovi e brillanti. Ma non è tutto: la composizione di questo agente impermeabilizzante offre il vantaggio di un'asciugatura estremamente rapida.

## PATENTED AND DEVELOPED TO GIVE THE FABRICS WATER-REPELLENT CHARACTERISTICS TO WATER, OILS AND STAINS IN GENERAL.

The **BIONIC-FINISH®** is inspired by shark skin which, contrary to popular belief, is not smooth but rather rough and consists of very small longitudinal grooves that allow water to pass over the body in a controlled manner, reducing friction to a minimum. Thanks to this special structure, the shark skin effect has been implemented in swimwear for competitions and is one of the best known discoveries in bionics.

The **BIONIC-FINISH®** system guarantees maximum breathability and allows the fabric to maintain a very soft hand, very high comfort, excellent durability and always new and bright colors. But that's not all: the composition of this waterproofing agent offers the advantage of extremely fast drying.

## BIONIC-FINISH® C6

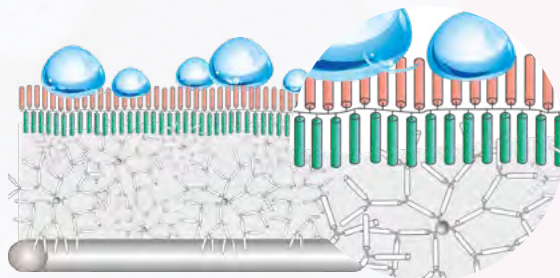
La nuova tecnologia **BIONIC-FINISH® C6** a basso impatto di fluoro, per un futuro migliore!

*The new **BIONIC-FINISH® C6** low impact fluoride technology, for a better future!*

Gocce d'acqua / Water drops  
Fluorocarburi / Fluorocarbons  
Catene di idrocarburi / Hydrocarbon chains

RUCOSTAR - **BIONIC-FINISH®**  
Dendimedri / Dendrimers

Tessuto / Fabric



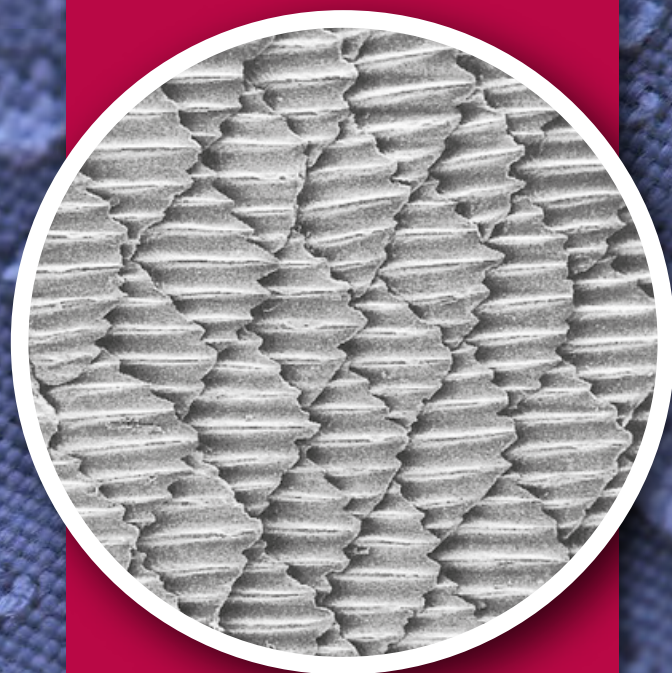
BIONIC  
FINISH® C6

BY RUDOLF GROUP

TRASPIRABILITÀ  
BREATHABILITY

DURATA  
DURATION

ASCIUGATURA RAPIDA  
QUICK DRYING



I tessuti nel nuovo **BIONIC-FINISH® C6** offrono una sensazione eccezionalmente morbida rispetto ai materiali trattati convenzionalmente.

*Fabrics made with the new **BIONIC-FINISH® C6** offer an exceptionally soft feel compared to conventionally treated materials.*

## BIONIC-FINISH® C6

Idro-oleorepellente, massimo comfort  
*Hydro-oil repellent, maximum comfort*

[www.rudolf-group.com](http://www.rudolf-group.com)

# SILVERPLUS®

Igiene, protezione e freschezza per i tessuti di domani: maggiore utilizzo, minor consumo di acqua.

*Hygiene, protection and freshness for tomorrow's fabrics: greater use, less water consumption.*

**GRAZIE AL TRATTAMENTO ANTIBATTERICO SILVERPLUS®, I TESSUTI SONO IGIENIZZATI E PROTETTI DAGLI ODORI SGRADREVOLI DEL CORPO.**

Questo trattamento innovativo crea un deposito virtualmente infinito dal quale vengono liberati ioni d'argento positivi altamente efficaci in piccole quantità, esattamente dosati quando necessario, cioè in presenza di umidità.

**Tessuti freschi anche a basse temperature di lavaggio.** Sono necessarie quantità significative di energia per il lavaggio, l'asciugatura, la stiratura dei capi professionali ad alte temperature.

**SILVERPLUS®** è il rimedio: i consumatori risparmiano energia, denaro e contribuiscono alla protezione dell'ambiente.

**THANKS TO THE SILVERPLUS® ANTIBACTERIAL TREATMENT, THE FABRICS ARE SANITIZED AND PROTECTED FROM UNPLEASANT BODY ODORS.**

*This innovative treatment creates a virtually infinite deposit from which highly effective positive silver ions are released in small quantities, exactly dosed when necessary, that is, in the presence of moisture.*



**FRESH FABRICS EVEN AT LOW WASHING TEMPERATURES.**

*Significant amounts of energy are required for washing, drying and ironing professional garments at high temperature.*

*SILVERPLUS® is the remedy consumers save energy, money and contribute to the protection of the environment.*

**Tessuto assorbiti-sudore con sistema protettivo SILVERPLUS®, ottimale evaporazione dell'umidità sulla superficie del tessuto**

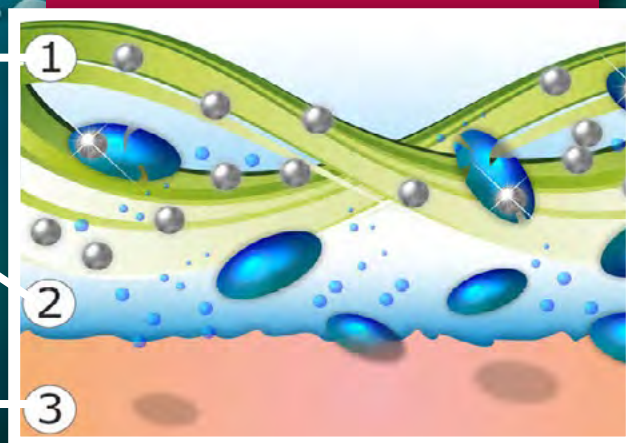
**Sweat-absorbing fabric with SILVERPLUS® protective system, optimal evaporation of moisture on the surface of the fabric**

**Evaporazione dell'umidità tra pelle / tessuto**

**Evaporation of moisture between leather / fabric**

**Processo di produzione del sudore**

**Sweat production process**



**SILVER+**

BY RUDOLF GROUP

Il tessuto trattato con **SILVERPLUS®** mostra una riduzione batterica del 99,9% dopo 100 cicli di lavaggio a 60° C e resiste anche al lavaggio a secco.

È stato dimostrato che l'uso di **SILVERPLUS®** non ha effetti negativi sull'ambiente.

- Resistente ai lavaggi, anche a secco
- Non altera il naturale equilibrio della pelle
- Non influenza lo spurgo biologico nel trattamento delle acque reflue

ANTIMICROBICO  
ANTIMICROBIAL

EFFETTO FRESCHEZZA  
FRESHNESS EFFECT

ECOLOGICO  
ECOLOGICAL

The fabric treated with **SILVERPLUS®** shows a bacterial reduction of 99.9% after 100 washing cycles at 60 ° C and is resistant to washing and dry cleaning.

It has been shown that the use of **SILVERPLUS®** has no negative effects on the environment.

- Resistant to washing, even when dry
- Does not alter the natural balance of the skin
- Does not affect biological purge in wastewater treatment

Uomo / Man																	
S		M		L		XL		XXL		XXXL		4XL		5XL			
42	44	46	48	50	52	52	54	54	56	58	60	62	64				
Donna / Woman																	
XS		S		M		L		XL		XXL		XXXL		4XL		5XL	
40	42	42	44	44	46	48	50	52	54	54	56	58	60	62			
Donna / Woman																	
I		II		III		IV											
XS - S		M - L		XL - XXL		3XL - 4XL											
Camicie / Shirts																	
XS		S		M		L		XL		XXL							
35	36	37	38	39	40	41	42	43	44	45	46						

Le misure sopra riportate sono indicative in quanto possono variare a seconda del modello e della vestibilità, per motivi di modellistica e di attualità. *The above measures can change according to the different styles and for design reasons.*

## CONSIGLI TECNICI

Per una buona durata dei capi sono consigliabili i seguenti accorgimenti:

- 1 Lavare i capi in acqua tiepida per almeno due volte prima di procedere con modifiche sartoriali.
- 2 Non lasciare i capi in ammollo.
- 3 Non é consigliabile usare prodotti chimici e in caso di necessità usare una modica quantità di candeggina (proporzione massima del 3%) solo su tessuti tinti in filo o color bianco. La ditta Giblor's si esonera da responsabilità per scolorimenti o usure dei tessuti, causati dall'uso improprio di eventuali prodotti chimici.
- 4 Per gli stampati non strofinare né spazzolare.
- 5 Il puro cotone prevede un ritiro del 3% massimo.
- 6 Per lo stiro attenersi alle basse temperature per i tessuti misti e sintetici; per il cotone, invece potranno essere usate temperature più elevate.
- 7 Mai procedere a smacchiature locali, pena il deterioramento dei tessuti.
- 8 I capi muniti di chiusura lampo vanno allacciati completamente prima del lavaggio in lavatrice.
- 9 Non porre mai a contatto la chiusura lampo con fonti di calore.

## TECHNICAL ADVICES

*For a well wearing of the clothes please read the following suggestions:*

- 1 *Wash the clothes in lukewarm water at least for two times before before proceeding with sartorial changes.*
- 2 *Never leave to soak.*
- 3 *If necessary, use a little quantity of bleach (maximum proportion of 3%) only for white and yarn dyed fabrics. Giblor's is not responsible for the fading or wear of the fabrics, due to an inappropriate use of chemical product.*
- 4 *For printed clothes do not rub and do not brush.*
- 5 *Pure cotton will have a shrinkage of max 3%.*
- 6 *How to iron: for the mixed and synthetic clothes use low temperature; for the cotton you can use higher temperature.*
- 7 *In order to avoid the deterioration of the fabrics, don't remove stains locally*
- 8 *Zip up all the clothes before washing them in the washing machine.*
- 9 *Never place the zip in contact with heat sources.*





**Lavaggio ad acqua / Water washing**

La vaschetta è il simbolo grafico usato per le informazioni relative al lavaggio in acqua.  
The basin is the symbol used for information relating to water washing.

 Lavaggio delicato Gentle wash	 Lavaggio 30° / 40° / 60° / 95°. Wash 30° / 40° / 60° / 95°.	 Lavaggio a mano con temperatura massima di 40°. Il capo non deve essere strizzato. The garment must be hand-washed, the temperature must not exceed 40°C. The garment must not be wrung.	 Non lavare. Do not wash.
---	---	---	--






**Candeggio / Bleaching**

Il triangolo è il simbolo del candeggio al cloro.  
The triangle is the chlorine bleaching symbol.

 È permesso l'uso di qualsiasi candeggiante diluito al 3%. It is allowed the use of any bleach diluted to 3%.	 Non candeggiare. Do not bleach.
--	---

**Stiratura / Ironing**

Il ferro da stiro è il simbolo relativo alle informazioni sulla stiratura. La temperatura ideale per ogni capo è indicata da punti neri riportati sul ferro.  
The iron is the symbol used for information relating to ironing. The black dots indicate the suitable temperature.

 Stiro temperatura massima 200° Max ironing temperature 200°	 Stiro temperatura massima 150° Max ironing temperature 150°	 Stiro temperatura massima 110° Max ironing temperature 110°	 Non stirare. Do not iron.	 Non stirare a vapore. Do not steam iron.
---	---	---	---	--

**Lavaggio a secco / Dry cleaning**

Il cerchio è il simbolo grafico relativo al lavaggio a secco e i segni riportati all'interno indicano il tipo di solvente adatto al tessuto.  
The circle is the dry-cleaning symbol and the signs on the inside indicate the suitable solvent-type.

 Lavare a secco con qualsiasi solvente. Dry clean using any solvent.	 Lavaggio delicato a secco con qualsiasi solvente. Gentle dry clean using any solvent.	 Non lavare a secco. Do not dry clean.
---	---	---

**Asciugatura / Drying**

I simboli dell'asciugatura sono rappresentati da un quadrato.  
The drying symbols are represented by a square.

 Asciugare a tamburo a bassa temperatura. Tumble dry low temperature.	 Non asciugare a tamburo. Do not tumble dry.	 Asciugatura verticale senza spremitura. Vertical drying without squeezing.
--	---	--

- A** **ADRIANO** pag. 26  
**ALAN** pag. 35 - 128  
**ALICE** pag. 126 - 127  
**ALTEA** pag. 110 - 111  
**ANCONA** pag. 39  
**ANDY** pag. 41  
**ATENE** pag. 35  
**AUGUSTIN** pag. 8 - 9  
**AURORA** pag. 103
- B** **BANDANA** pag. 42 - 43  
**BARI** pag. 39 - 72 - 73  
**BRUCE** pag. 34
- C** **CALIFORNIA** pag. 64  
**CAMELIA** pag. 108 - 109  
**CAMERON** pag. 147  
**CAPPELLO SCUOLA** pag. 40  
**CAPRI** pag. 80 - 81  
**CARMEN** pag. 140  
**CELINE** pag. 10 - 11  
**COPPOLA** pag. 89  
**COPRICAPO** pag. 41  
**CRAVATTA DONNA** pag. 89  
**CRAVATTA UNISEX** pag. 89
- D** **DANA** pag. 92 - 94  
**DIONISIO** pag. 14 - 15  
**DOUGLAS** pag. 63
- E** **ELEA** pag. 142  
**ELIO** pag. 93 - 95  
**ENRICO** pag. 30 - 31 - 32
- F** **FARA** pag. 103
- G** **GABRIELE** pag. 124 - 125  
**GARY** pag. 132 - 133  
**GIOVANNI** pag. 93 - 95  
**GIOVE** pag. 33  
**GIUNONE** pag. 38
- I** **ILARIA** pag. 146  
**ISOTTA** pag. 121
- J** **JASON** pag. 134 - 135  
**JERRY** pag. 84 - 85
- K** **KANSAS** pag. 65  
**KLIMT** pag. 40
- L** **LANZAROTE** pag. 44  
**LATINA** pag. 82 - 83  
**LAYLA** pag. 92 - 94  
**LIONE** pag. 49 - 51 - 53  
**LIPARI** pag. 74 - 75  
**LONDON** pag. 37  
**LUNA** pag. 62 - 67
- M** **MAGNOLIA** pag. 107  
**MANCHESTER** pag. 62
- MATERA** pag. 39 - 70 - 71  
**MATTEO** pag. 98  
**MAURIZIO** pag. 141  
**MIGUEL** pag. 96  
**MIKE** pag. 120  
**MILENA** pag. 130 - 131  
**MILLY** pag. 120  
**MIMOSA** pag. 107  
**MINORCA** pag. 44  
**MONET** pag. 40
- N** **NAPOLI** pag. 48 - 50 - 52 - 56 - 58 - 60  
**NIZZA** pag. 66  
**NOAH** pag. 34  
**NOVAK** pag. 100
- O** **OMERO** pag. 38  
**ORTENSIA** pag. 104 - 105
- P** **PANAREA** pag. 86 - 87  
**PAPILLON** pag. 89  
**PARIGI** pag. 36 - 37  
**PATRIZIO** pag. 16 - 17 - 20  
**PIERO** pag. 129  
**PINES** pag. 143  
**PITAGORA** pag. 136 - 137  
**PLUTONE** pag. 28 - 29  
**POSITANO** pag. 76 - 77  
**PRIMULA** pag. 112 - 113  
**PRINCE** pag. 102  
**PUB** pag. 78 - 79
- R** **RAUL** pag. 22 - 23  
**RENO** pag. 48 - 50 - 52 - 56 - 58 - 60  
**RICKY** pag. 114 - 115  
**RODANO** pag. 57 - 59 - 61  
**ROSITA** pag. 97
- S** **SARA** pag. 144 - 145  
**SCOTLAND** pag. 49 - 51 - 53  
**SENNA** pag. 57 - 59 - 61  
**SHANNON** pag. 63  
**STELVIO** pag. 44  
**SUSI** pag. 18 - 19 - 21
- T** **THIAGO** pag. 24 - 25  
**TOMMASO** pag. 27  
**TOMMY** pag. 89  
**TOQUE** pag. 40  
**TORCIONE** pag. 41  
**TRISTANO** pag. 121
- U** **ULISSE** pag. 12 - 13
- V** **VENUS** pag. 101  
**VIOLA** pag. 106
- Z** **ZAGABRIA** pag. 36 - 37  
**ZANTE** pag. 68 - 69  
**ZEFIRO** pag. 116 - 117  
**ZOCCOLO IN POLIURETANO** pag. 45





**SCOPRI LE COLLEZIONI SU [ROSSINI1969.IT](http://ROSSINI1969.IT)**  
**VIEW COLLECTIONS ON [ROSSINI1969.IT](http://ROSSINI1969.IT)**

All rights reserved. Rossini® is a registered trademark. Rossini® maintain exclusive property rights for the contents of this catalogue, and is protected under copyright law. You may not modify, publish, transmit, sell, copy or create extracts or distribute any part of the contents for commercial purposes.

rossini1969.it



ESSENTIAL  
COLLECTION  
by **Giblor's**  
italian work*life* specialist

**rossini.**

Via Pastrengo, 7M/9  
24068 Seriate (BG)  
t. +39 035 312696  
p.iva 01992400166  
commerciale@rossini1969.it

Capitale sociale: Euro 28 Mln, interamente versati

